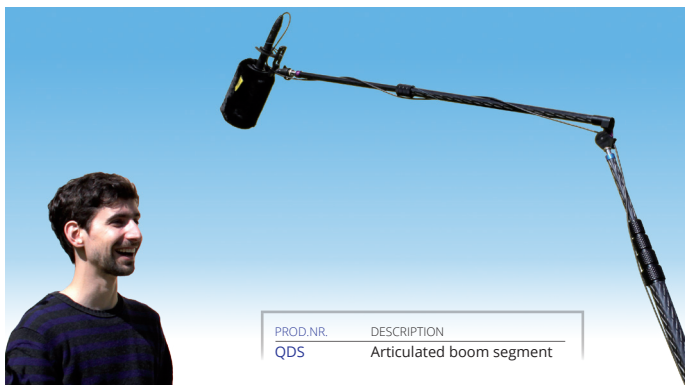


DIPSTICK

QDS

The Dipstick is an add-on accessory for our booms (or other brands) and permits to boom over the head of a cameraman or around corners, allowing to get closer to the action. The toothed flange can be set to predefined angles and once locked will not turn.

The Dipstick can be folded back on the boom or removed when not required.



TRANSPORT CASES & SHOULDER BAGS

BC & ABB



Hard and soft boom cases are available for all booms. The BC tubes with a diameter of 5 cm are made out of robust PVC.

The water-repellent shoulder bags are available in three sizes.



ABB-80

PROD.NR.	DESCRIPTION
BC50	Boom case for QX 550, length 63 cm
BC65	Boom case for QX 565, length 73 cm
BC80	Boom case for QX 580, length 93 cm
BC100	Boom case for QX 5100, QP 480 & QSM, length 113 cm
BC130	Boom case for QX 5130, length 140 cm
BC150	Boom case for QP4140 & QS, length 163 cm
BC200	Boom case for QP 5190 & QP 6200, length 249 cm
ABB-80	Boom bag for QX 565, length 80 cm
ABB-110	Boom bag for QX 580, QX 5100, QP 480 & QSM, length 110 cm
ABB-160	Boom bag for QX 5130, QP 4140 & QS, length 160 cm

QUICKLOK QRT

The Ambient QuickLok quick release tip for microphone assemblies is the first snap connection noise-free enough to allow for professional boom action and similar applications.

The body of the QuickLok mounts onto the 3/8" thread of a microphone boom or stand and is secured in place via a grub screw. The tip fits into the mic support and can be tightened securely using a screwdriver or similar through a cross hole. The ingenious mechanism with tapered design provides a rigid, absolutely rattle free joint and has a self-locking and self-locating action.

This universal piece will find its place for quick disassembly of rigs, microphones, antennas and more not only on location, but also in music recording studios.



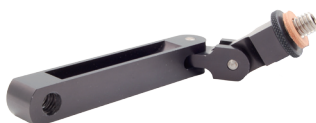
PROD.NR.	DESCRIPTION
QRT	Quick release tip incl. 2x threaded tips
QRTT	Extra 3/8" thread tip for QuickLok



VERTICAL SWIVEL QAVS

This 2-axes swivel is used for mic assemblies (stereo bar, A-RAY, etc.), which are suspended from a boom such as the Jumbo series.

It ensures that the mic assembly always levels out horizontally independent of the angle the boom is set at. When the boom is vertical the MikeLink prevents the microphone assembly from contacting the boom and thus making noise.



It also allows the microphone position to be set up at ground level and then be swung up into position.

PROD.NR.	DESCRIPTION
QAVS	MikeLink vertical swivel

STEREO BAR QAMS

The QAMS is a highly flexible microphone mount for your stereo recordings.

Variable distances between 6 and 46.5 centimeters give you the possibility to record with sophisticated stereo techniques from XY to AB.



PROD.NR.	DESCRIPTION
QAMS	Stereo microphone bar with sliding screws

QAT-ECO

QAT-ECO/cabled, light XLR fixture for boom poles

The XLR TIP (QAT-ECO/Kabel) is a simplified version that, due to its simplicity and low cost. It can be firmly attached to the mic assembly using the QuickLok tip QRTT or the spigot QAT-AD.

KEY FEATURES

- Comfortable break point
Used together with QuickLok, (un-) mounting a microphone/windshield combination becomes "a snap".
- Compatible with any mic suspension or windshield.
- Greatly reduces handling noise compared to traditional setup due to very thin cable from XLR to mic.
- Mounting of plug-on transmitter at the boom tip.
- Rigid construction guarantees that the transmitter will not move around or knock against the boom.
- Configurable for mono or stereo microphones
- Easy repairs or re-configuration using standard Neutrik connectors.
- Thin flexible cable is available from Ambient.



QAT-ECO/Kabel



QAT-AD



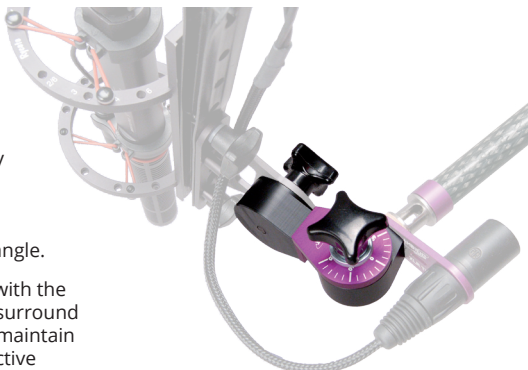
QAT-ECO

PROD.NR.	DESCRIPTION
QAT-ECO/Kabel	QAT-ECO with thin cable for wind shield
QAT/AD	Spigot with internal and outer 3/8" thread
QAT-ECO	XLR TIP

TWISTER QUM

The Twister is a knuckle joint with two axes of rotation allowing the mic assembly to be adjusted horizontally, independent of the booming angle.

This is essential with the use of stereo or surround microphones to maintain a correct perspective reproduction.



PROD.NR.	DESCRIPTION
QUM	Universal mic swivel

QUICKPOLE WIRELESS BOOM

QWB

Growing complexity of the scene, less time for setup and the demand to have the microphone instantly on spot are common for location sets or ENG situations of today.

The requirements make a wireless boom the system of choice.

Although some manufacturers provide plug-on transmitters for this purpose, these units lack the versatility of a traditional transmitter that can also be used to quickly wire up an actor or reporter on demand.

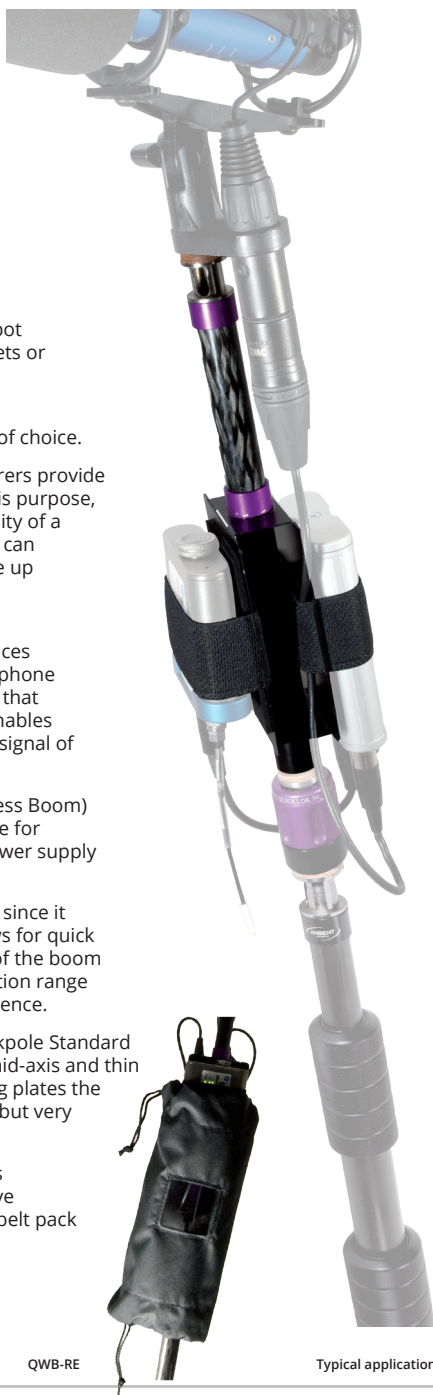
Ambient Recording introduces the QWB and UMP II microphone power supply (see page 28) that addresses this issue and enables a belt back to transmit the signal of any powered microphone.

The QWB (Quickpole Wireless Boom) resembles a mounting plate for transmitter and the mic power supply at the tip of the boom.

This is a preferred position since it reduces cable clutter, allows for quick collapsing and expanding of the boom and provides a wide operation range with a minimum of interference.

Due to the use of our Quickpole Standard carbon fiber tube for the mid-axis and thin aluminum for the mounting plates the construction is lightweight but very sturdy at the same time.

Velcro Straps and soft pads provide quick, easy and save mounting of any common belt pack TX and the UMP II.



QWB-RE

Typical application

PROD.NR.	DESCRIPTION
QWB	Mounting plate for UMP II and transmitter
QWB-RE	Rain cover for QWB with UMP II / TX