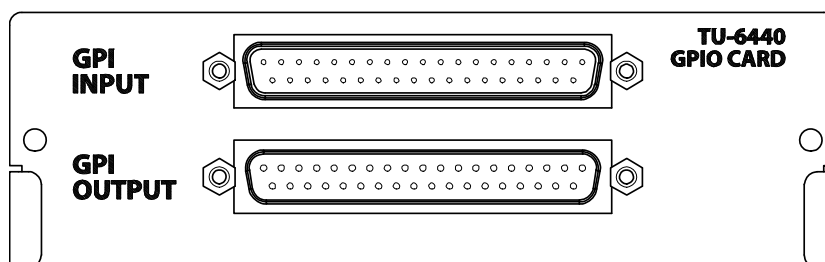


TAMURA CORPORATION

Instruction Manual

GPIO CARD

Model Number: **TU-6440**



This Instruction Manual describes important precautions to prevent any accident and procedures to handle this product. Read this Instruction Manual carefully to use this product safely.

After reading, keep this in a safe place where users can refer to as needed.


Disposing of this Equipment



When disposing this equipment, contact an authorized industrial waste disposal operator to handle the disposal since this equipment needs to be disposed as an industrial waste.



Safety Precautions

This section describes the "prohibitions" and "precautions" important for you to use this product safely.

Before use, be sure to read this manual so that you can use the system correctly.

 Caution	This sign gives a message assuming possible human injury or property damage if the system is mishandled ignoring the message given with this sign.
--	--

	The Δ symbol shows a message (including a warning) that must be paid attention to. The specific precaution is shown by picture or text near or in the Δ .
	The \bigcirc symbol shows a prohibition (prohibited action). The specific prohibition is shown by picture or text near or in the \bigcirc .

Caution	
	Do not put this product in places where it is susceptible to static electricity (such as on a carpet). This may cause system malfunctions.
	Do not connect/disconnect this product with the power switch on. This may cause system malfunctions.

Overview

This card is control interface card that input and output general-purpose control signals

About How to install

Please see the instruction manual for installation on the installation method of the card. Installing or removing make sure unplugged the device must be equipped with this unit. Use securely fastened with screws on either side of the card.

If the mounting of the screw is loose, you do not can use it in the correct state. Because the electrical signal level is not stable.

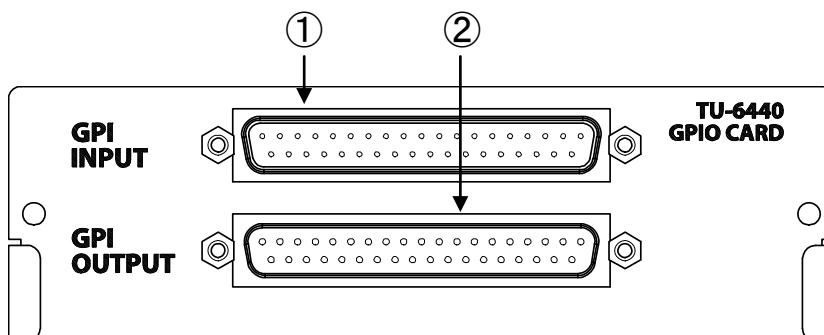
Included items

Product code	Model	Name	Quantity	Remarks
M-21300273-00	TU-6440	GPIO CARD	1	
		Mounting screw	2	M3x8
		Instruction Manual	1	This Book

Specifications

General-purpose control signal inputs(GPI INPUT)	16ch electrically isolated opto-coupler inputs 37-pin D-type connector(male)
General-purpose control signal outputs(GPI OUTPUT)	16ch open-collector outputs 37-pin D-type connector(female)
Dimensions	129(W)×40(H)×152(D)mm
Weight	168g

Description of parts



①. GPI INPUT Connector

This is the connector for general-purpose control signal inputs.

②. GPI OUTPUT Connector

This is the connector for general-purpose control signal outputs.

Connector Pin List

GPI INPUT

Connector : DCLC-J37PAF-10L9E Locking screw 2.6mm

Pin No.	Signal	Pin No.	Signal
1	+COM1	20	+COM4
2	IN1-1	21	IN4-1
3	IN1-2	22	IN4-2
4	IN1-3	23	IN4-3
5	IN1-4	24	IN4-4
6	GND	25	GND
7	+COM2	26	NC
8	IN2-1	27	NC
9	IN2-2	28	NC
10	IN2-3	29	NC
11	IN2-4	30	NC
12	GND	31	GND
13	+COM3	32	NC
14	IN3-1	33	NC
15	IN3-2	34	NC
16	IN3-3	35	NC
17	IN3-4	36	NC
18	GND	37	GND
19	NC		

GPI OUTPUT

Connector : DCLC-J37SAF-10L9E Locking screw 2.6mm

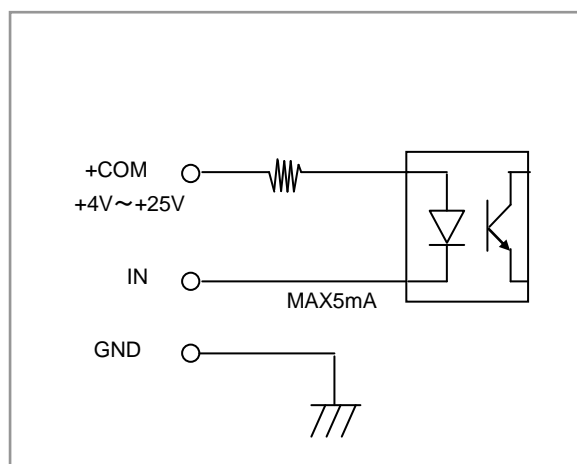
Pin No.	Signal	Pin No.	Signal
1	OUT1	20	OUT9
2	COM1	21	COM9
3	OUT2	22	OUT10
4	COM2	23	COM10
5	OUT3	24	OUT11
6	COM3	25	COM11
7	OUT4	26	OUT12
8	COM4	27	COM12
9	OUT5	28	OUT13
10	COM5	29	COM13
11	OUT6	30	OUT14
12	COM6	31	COM14
13	OUT7	32	OUT15
14	COM7	33	COM15
15	OUT8	34	OUT16
16	COM8	35	COM16
17	+5V	36	GND
18	+5V	37	GND
19	NC		

Rated Input / Output Pins

GPI INPUT

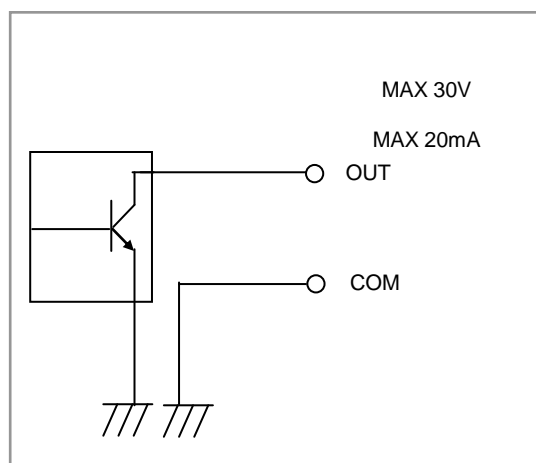
+COM terminal of GPI INPUT should be used within the range of voltage shown below.

The current shown in the figure below flows at IN terminal.

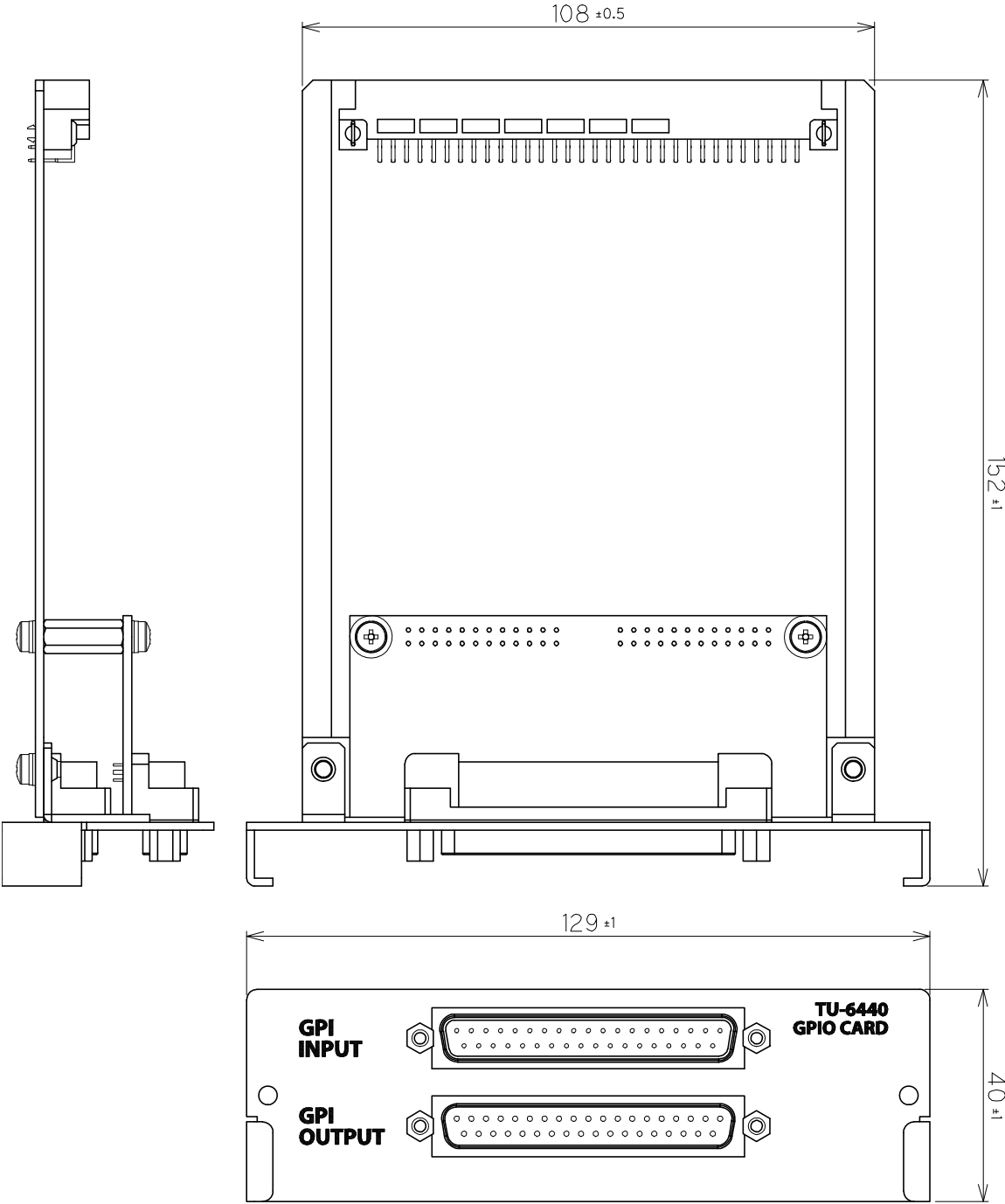


GPI OUTPUT

GPI OUTPUT should be used within the range of voltage and current shown below.



Dimensions



About Customer Service

If you experience any problems with our products and require any servicing, or have any questions about TAMURA product line, please contact your TAMURA sales representative or TAMURA at the following locations.

To help speed up servicing and readjustment, please be ready to describe the problem accurately, what operations you were performing before and after it happened, or the history of usage.



TAMURA CORPORATION

(Head Office)

1-19-43, Higashi-Oizumi, Nerima-ku, Tokyo, 178-8511 Japan

Phone : +81-3-3978-2111 Fax : +81-3-3978-0230

(Contact)

International Sales Broadcom Business Unit

Phone : +81-3-3978-2242 Fax : +81-3-3978-2005