

Please Read This First

- With the UVC (USB video class) and UAC (USB audio class) standards used by equipment such as the VR-50HD, factors such as computer load can cause data overflow. To minimize the risks of data drops, do not boot software like web camera controller/effector when this software is running.
- When switching the output format, always be sure to make the switch only when the USB connection to the computer has been terminated.
- The Windows 8 or later version of this program can use Intel Quick Sync Video only when a Roland USB video class device is connected. Note, however, that when hardware encoding cannot be used due to configuration or settings, such as the CPU, chipset, BIOS settings, or drivers, software encoding is performed.
- In the version for Windows 7, due to restrictions of the operating system, the maximum file size of saved video files is limited to 4 GB.

Connection and Booting

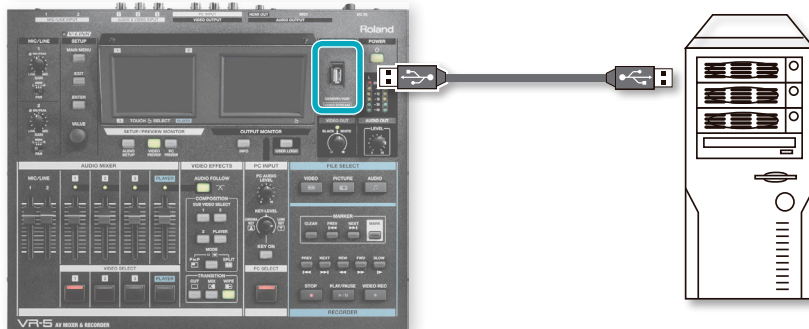
1. Connect the computer and the VR-50HD or other device.

Use a USB cable to connect a USB port on the computer to a USB port on the VR-50HD or the like.

- On the VR-3, VR-5, VR-4EX, or VR-3EX, make the connection to a USB 2.0 port.
- Connect the VR-50HD or VR-4HD to USB 3.0 port using a USB 3.0 cable.

NOTE

- Use the accessory USB cable (type A - type A) when connecting the VR-5.

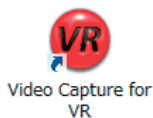


- Do not connect the VR-3/VR-5/V-4EX/VR-3EX to USB 3.0 port of your computer.

2. Booting of this software.

Double click the icon below on your computer to boot this software.

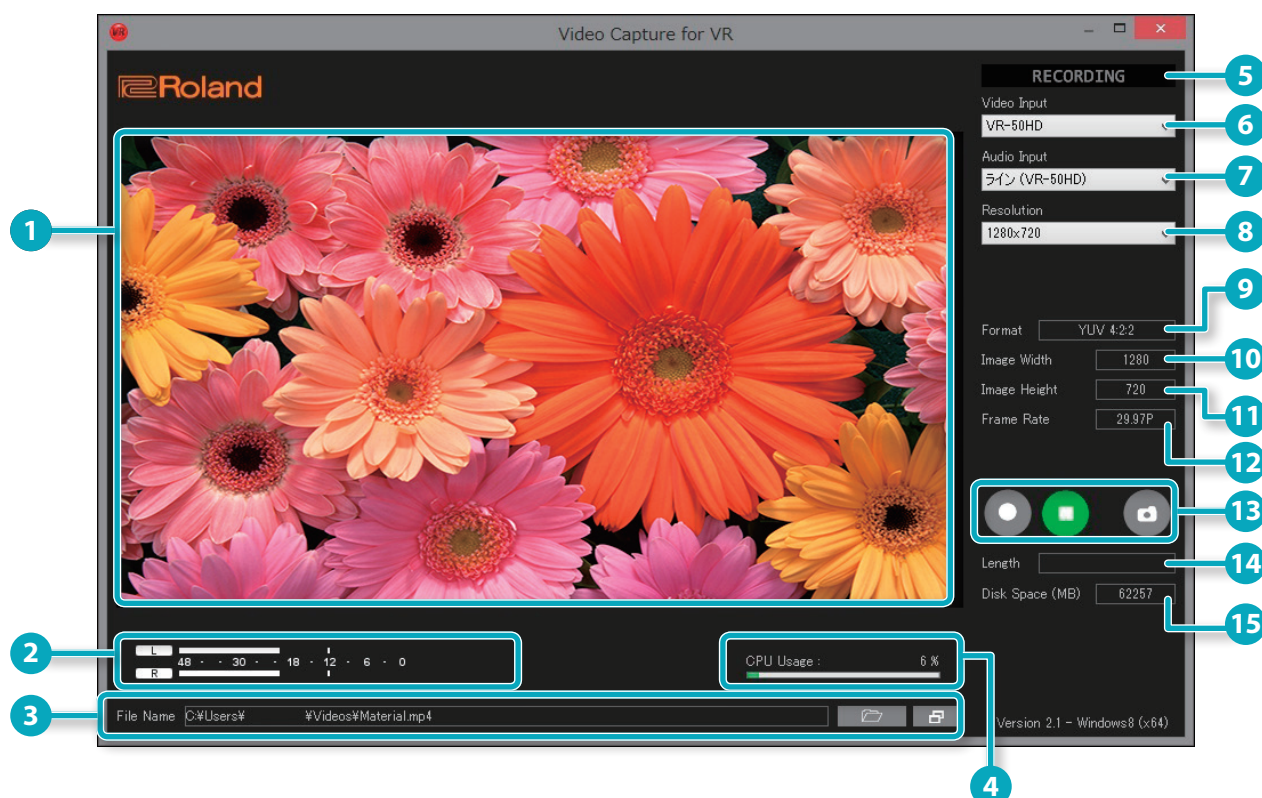
The icon appears on desktop of your computer when the installation is completed.







Click the close box to quit this software.

- Roland is either registered trademark or trademark of Roland Corporation in the United States and/or other countries.
- Company names and product names appearing in this document are registered trademarks or trademarks of their respective owners.

Part Names and Functions



No.	Name	Explanation
1	Preview	This part displays the output image for your preview.
2	Level Meter	This part displays the audio level. As the audio is separately captured, the timing may differ. Match the timing of video and audio using editing software or the like if necessary.
3	File Name	This part displays the name of captured file and the saving destination. Click the button located right side of this section to change the destination or edit the file name. * By default, the file name is "Material" and the saving destination is "Video" folder. MEMO Click the button below to open the explorer screen. It is convenient to select the target folder. 
4	CPU Usage Meter	A level meter shows the rate of CPU usage on the computer. * When saving files, check whether the file is in the green or occasionally yellow range. If it remains always in the yellow or red range, it means the computer lacks sufficient processing capacity. Lower the output resolution or frame rate or both on the VR-50HD or other output device.
5	RECORDING Indicator	This indicator lights when the recording is started.
6	Video Input	Select the video input device connected to your computer.
7	Audio Input	Select the audio input device connected to your computer.
8	Resolution	Select the resolution of the captured video. * When the resolution different from the source is selected, this software squeezes or stretches the image.
9	Format	This part displays the format of captured image.
10	Image Width	This part displays the captured image width.
11	Image Height	This part displays the captured image height.

No.	Name	Explanation
12	Frame Rate	This part displays the frame rate of captured image.
13	 Start capture	Click this to start capture.
	 Stop capture	Click this to stop capture.
	 Take Screenshot	Click this to capture the displayed image on preview as a still image file. * The file format of captured still image is .png and the destination folder is the same as video capturing.
14	Length	This part displays the length of the captured video.
15	Disk Space	This part displays the remaining capacity of the destination storage in mega byte unit.

Recording Format

When you perform capture using this software, the data is saved on the computer in the following recording format.

		Windows 7 (*1)		Windows 8	
File format		MP4		MP4	
Format	NTSC	Format	Bit rate	Format	Bit rate
		320 x 240/29.97p	1 Mbps	320 x 240/29.97p	1 Mbps
		640 x 480/29.97p	2.5 Mbps	640 x 480/29.97p	2.5 Mbps
		720 x 480/29.97p	3 Mbps	720 x 480/29.97p	3 Mbps
		854 x 480/29.97p	3 Mbps	854 x 480/29.97p	3 Mbps
		320 x 240/59.94p	1.5 Mbps	1280 x 720/29.97p	7 Mbps
		640 x 480/59.94p	5 Mbps	1920 x 1080/29.97p	15 Mbps
		720 x 480/59.94p	5 Mbps	320 x 240/59.94p	1.5 Mbps
		854 x 480/59.94p	6 Mbps	640 x 480/59.94p	5 Mbps
				720 x 480/59.94p	5 Mbps
			854 x 480/59.94p	6 Mbps	
			1280 x 720/59.94p	14 Mbps	
			1920 x 1080/59.94p	30 Mbps	
	PAL	320 x 240/25p	1 Mbps	320 x 240/25p	1 Mbps
		640 x 480/25p	2.5 Mbps	640 x 480/25p	2.5 Mbps
		720 x 576/25p	3 Mbps	720 x 576/25p	3 Mbps
		1024 x 576/25p	4 Mbps	1024 x 576/25p	4 Mbps
		320 x 240/50p	1.5 Mbps	1280 x 720/25p	6 Mbps
		640 x 480/50p	4 Mbps	1920 x 1080/25p	13 Mbps
		720 x 576/50p	6 Mbps	320 x 240/50p	1.5 Mbps
1024 x 576/50p		8 Mbps	640 x 480/50p	4 Mbps	
			720 x 576/50p	6 Mbps	
			1024 x 576/50p	8 Mbps	
		1280 x 720/50p	11 Mbps		
		1920 x 1080/50p	26 Mbps		
Video compression codec		H.264		H.264	
Audio compression format		AAC		AAC	

(*1) In the version for Windows 7, due to restrictions of the operating system, the maximum file size of saved video files is limited to 4 GB.

- * The bit rate values are approximate. They can vary slightly according to capture results.
- * Files are encoded and saved using the screen size specified by the "Resolution" setting.
- * Maximum recording time is within the range of what can fit within the maximum file size, and can be up to 12 hours.
- * Still images are saved as PNG files.