



Product Brochure

Winter 2019

Ki Pro® Multi-Channel HD/SD H.264 Recorder and Player

3rd YEAR
LEGENDARY
WARRANTY

Ki Pro GO \$3,995

Low Cost, High Quality H.264 Recording

Ki Pro GO is an H.264 HD/SD multi-channel recording device. It offers a wide range of genlock free HDMI and SDI. All five USBs can be used however the user wants. 4 primary and 1 redundant (backup) recording, but they can be assigned to difference USB destinations. The four channels to the fifth USB 3.2 port on the rear utilizing off the shelf USB media. An immense array of recording options, all in a standard 2RU half rack width design.

HDMI and SDI multi-channel monitoring during recording enables Ki Pro GO to display up to four channels of video as a matrix monitoring output on a single monitor. The device's flexible architecture is suited for a range of applications including live production, sports, corporate events, training, house of worship, and other video markets.



Size : 219.46 x 268.60 x 84.08 mm

Powerful I/O and Flexible Recording to USB

- 4x HDMI inputs
- 4x 3G-SDI inputs
- Genlock free inputs
- 4x recording channels from any combination of inputs
- 4x USB recording media ports, compatible with off the shelf USB 3.2 Gen 1 media
- Redundant recording with -5 USB recording media ports, compatible with recommended off the shelf USB 3.1 gen 1 media

High Quality H.264 Recording and Playback

- Multi-channel recording and single channel playback
- Selectable recording profiles
 - Low
 - Medium
 - High
- Bit rates up to 15 Mbps,
 - 8-bit HD/SD image quality
 - 4:2:0 chroma subsampling
- Compatible with any H.264 playback platform from software players to OTT services

Intuitive Interface, Multi-Channel Monitoring

- HDMI and SDI multi-channel matrix monitoring
- Easy to use web UI, configure and control from standard web browsers anywhere
- Front panel button controls with integrated HD resolution screen
- Standalone operation
- Optional rack mount shelf available (KPU-SHELF)
- Three year warranty

Ki Pro Ultra Plus \$3,995

Multi-Channel HD Recorder
4K/UltraHD/2K/HD Player and Recorder

- 4K/UltraHD/2K/HD record and playback
- Multi-channel 2K/HD recording to Apple ProRes
- Avid DNxHR and Avid DNxHD recording and playback
- 4x 3G-SDI I/O, HDMI 2.0 I/O
- Fiber SFP Cages for long cable runs
- HDR10 and HLG capture and playback
- Three year warranty

HDR **ProRes** Avid DNxHD® MXF Avid DNxHR® MXF



AJA Pak Media

Available in 2TB, 1TB, 512GB and 256GB capacities

Size : 219.46 x 237.24 x 84.08 mm

Ki Pro Ultra \$2,995

4K/UltraHD and 2K/HD Recorder and Player

- 4K/UltraHD/2K/HD recording and playback
- Apple ProRes recording and playback
- Avid DNxHR and DNxHD recording and playback
- 4x 3G-SDI I/O, HDMI I/O
- Fiber SFP cages for long cable runs
- Three year warranty

ProRes Avid DNxHD® MXF Avid DNxHR® MXF



AJA Pak Media

Available in 2TB, 1TB, 512GB and 256GB capacities

Size: 219.46 x 237.24 x 84.08 mm

Ki Pro Rack \$1,995

1RU HD/SD Recorder and Player

- HD/SD recorder and player
- Record to Apple ProRes or Avid DNxHD
- SDI, HDMI and Component Video I/O
- AES and XLR Audio I/O
- 2x KiStor media bays with Ki Protect
- Up, down, cross-conversion built in
- Built in web server for GUI access
- REF, LTC and RS-422 support
- Three year warranty



AJA KiStor Media

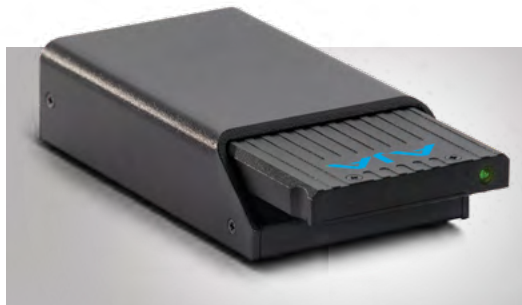
Available in 1TB, 512GB SSD, 500GB HDD
and 256GB SSD capacities

Size : 482.6mm x 317.5mm x 44.5mm



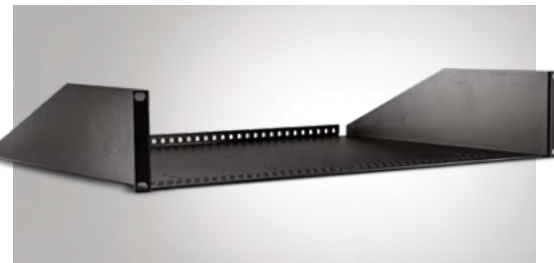
Pak Media

Pak Media is a high capacity solid state drive encased in a protective housing with a rugged connection engineered to handle the rigors of repeated use in the field. Available in 2TB, 1TB, 512GB and 256GB capacities. Designed for use with Ki Pro Ultra Plus, and Ki Pro Ultra.



Pak Dock

External Dock for Pak Media with Thunderbolt and USB 3.0 connections for fast transfer of media to a host computer.



Ki Pro Shelf

Ki Pro Ultra Plus, Ki Pro Ultra, and Ki Pro GO feature a small footprint for desktop use or can be mounted side by side using the additional KPU-Shelf for rackmount applications.



KiStor Media

KiStor Media is a high capacity solid state drive encased in a protective housing with a rugged connection engineered to handle the rigors of repeated use in the field. Available in 1TB, 512GB and 256GB capacities. Designed for use with Ki Pro Rack.



KiStor Drive

External Dock for KiStor Media with Thunderbolt and USB 3.0 connections for fast transfer of media to a host computer.



Reliable Storage Media

Ki Pro Ultra Plus, Ki Pro Ultra, and Ki Pro Rack include Ki Protect, a feature that helps to ensure data integrity if a media drive is accidentally removed or loses power during recording.

The only loss that should be incurred is the last few frames that were in transit to the media drive to be recorded when the operation was interrupted, providing greater peace of mind on set and in the studio.

HELO

Stream, Record, Deliver H.264 at the Touch of a Button

3rd YEAR
LEGENDARY
WARRANTY

HELO \$1,295



Connect

Your projects vary, you need flexible connectivity. HELO delivers with 3G-SDI and HDMI video inputs and outputs.

24-bit audio at 48 kHz embedded in the SDI or HDMI signal ensures you never lose sync, plus Line Level, Unbalanced stereo 3.5mm TRS connectors have you covered for live audio capture.



Encode

Your goal is efficiency with beautiful results.

HELO encodes to H.264/MPEG-4 ensuring bandwidth efficiencies with widely compatible files. From tablets to smartphones, desktops to Smart TVs, no translation necessary.



Stream

Streaming can be complex, HELO makes it simple. A USB connection and web browser based UI allows you to setup and configure your CDN connection before you arrive at your event. On site, simply press the Stream button and deliver your project across HELO's Ethernet connection, which supports RTMPE, RTMP, RTSP and unicast or multicast RTP.

HLS streaming adds direct interoperability with Apple® iPads® and other consumer devices. AV Mute allows for uploading your custom graphic to your stream before the event begins.



Record

Live means Now.
Live means Pressure.

HELO offers a dedicated Record button right on the front of HELO's small and mobile interface for immediate recording. It also provides simultaneous redundant recording to two media devices: CIFS/SMB, NFS, SD, or USB.

Simply plug in your exFAT or FAT32 formatted USB drive, SD card or connected network storage and record immediately.



Web Server Built-In

You serve the web.
HELO serves you.

AJA eMini-Setup and HELO's easy to use web browser Interface make HELO simple to setup, configure and update firmware at any time and with v4.0 you can capture Logs for simple trouble shooting.

Connect to HELO either via its direct USB port to set static/dynamic IP addresses though AJA eMini-Setup software or over the network using HELO's web server generated UI.



Scheduler and Automation Control

Point HELO to an event calendar for a set and forget recording and streaming experience.

For more complex situations, achieve full automation with an easy to script control API.



Size : 177.8 x 118.37 x 25.91 mm

lo[®] Powerful and Flexible Professional I/O

3 LEGENDARY
YEAR
WARRANTY

lo 4K Plus \$2,495



Size : 222.0 x 206.0 x 41.9 mm

lo 4K Plus

- 12G-SDI and HDMI 2.0 I/O over Thunderbolt™ 3
- 4K/UltraHD/HD/SD capture and playback
- 4x bidirectional 12G-SDI and HDMI 2.0 I/O with HFR support up to 4K 60p at 4:2:2
- 10-bit high quality 4:2:2, 4:4:4 and High Frame Rate workflow support
- Real time 4K/UltraHD to 2K/HD down-conversion over SDI Monitor Out
- 16-channel embedded audio on SDI; 8-channel embedded audio on HDMI; 8-channel analog audio in or out or 4-channel in and out via XLR break-out
- Downstream keyer
- Compatible with leading creative apps
- Three year warranty



lo 4K \$1,995



Size : 222.0 x 180.09 x 41.91 mm

lo 4K

- 3G-SDI and HDMI 1.4b I/O over Thunderbolt™ 2
- 4K/UltraHD/HD/SD capture and playback
- 4x bidirectional 3G-SDI and HDMI 1.4b I/O with HFR support up to 4K 60p at 4:2:2
- 10-bit high quality 4:2:2, 4:4:4 and High Frame Rate workflow support
- Real time 4K/UltraHD to 2K/HD down-conversion over SDI Monitor Out
- 16-channel embedded audio on SDI; 8-channel embedded audio on HDMI; 4-channel analog audio out via XLR breakout
- Downstream keyer
- Compatible with leading creative apps
- Three year warranty



Io | IP \$2,495



Size : 222.0 x 206.0 x 41.91 mm

3 YEAR LEGENDARY WARRANTY

Io IP

- IP Video and Audio I/O over Thunderbolt
- 4K/UltraHD/2K/HD/SD Video and Audio over 10 GigE up to 60/50p
- Both SMPTE ST 2110 and SMPTE ST 2022-6 supported
- Redundancy / High availability via SMPTE ST 2022-6/7 up to 2K/HD
- HDMI, 3G-SDI and Analog Audio Outputs for local monitoring
- NMOS support
- Reference Input (Analog black burst or Tri-level)
- macOS, Windows and Linux support
- Compatible with leading creative apps
- Three year warranty



HDR



Io | XT \$1,495



Size : 222.0 x 180.09 x 41.91 mm

Io XT

- HD/SD Video I/O up to 60p
- 3G-SDI, HDMI I/O and Component Out
- Analog Audio Out over DB-25
- Downstream keyer
- Up, down, cross-conversion
- Ref/LTC and RS-422 ports
- Compatible with leading creative apps
- Three year warranty



io Express \$995

3 YEAR LEGENDARY WARRANTY

io Express

- HD/SD Video I/O up to 60p
- HD-SDI, HDMI I/O and Component Out
- Ref/LTC and RS-422 ports
- 2-channel, 16 and 24-bit unbalanced audio (via RCA jack)
- PCIe connection port
- Compatible with leading creative apps
- Three year warranty



Size : 222.0 x 180.09 x 41.91 mm

io Software Compatibility

io products are cross-platform and compatible with a wide range of professional macOS® and Windows® software applications.

AJA drivers and plug-ins create a seamless integration between the native software and AJA's high quality hardware that lets you focus on the work, not the technology.

View our software compatibility chart for the following categories:

Audio | Color | Dailies | Editorial | Effects | Graphics | Ingest/Payout | Restoration
Streaming/Live Production | Test/Measure

[View Compatibility Chart](#)



FilmLight

SpectraCal

TOOLS ON AIR



KONA® Professional Performance, Unparalleled Reliability

3 LEGENDARY
YEAR
WARRANTY

KONA® | 5 \$2,995



KONA 5

- Supports 8K/4K/UltraHD ingest and output at frame rates up to 50/60 fps
- Supports 4:4:4 and 4:2:2 workflows
- 4x bidirectional 12G-SDI spigots
- 12-bit color support (application dependent)
- 8K or multi-channel 4K support for OEM applications with AJA SDK
- HDMI 2.0 output (4K/UltraHD HFR 4:2:2 10-bit)
- HDR: HDR10 support - HDR Infoframe metadata, in accordance with HDMI 2.0a/CTA-861.3, HLG (Hybrid Log Gamma) support
- 8-ch AES/EBU, 8-ch embedded HDMI, and 16-ch embedded SDI digital audio I/O
- Reference Input on card (Analog black burst or Tri-level)
- Extend external connectivity with included breakout cable
- RS-422 support on 9-pin connector
- macOS, Windows and Linux support
- Compatible with leading creative apps
- Three year warranty



KONA® | IP \$2,495



KONA IP

- 4K/UltraHD/2K/HD/SD Video and Audio over 10 GigE up to 60/50p
- Both SMPTE ST 2110 and SMPTE ST 2022-6 supported
- Redundancy / High availability via SMPTE ST 2022-6/7 up to 2K/HD
- TR-01 compliant JPEG 2000 workflows support with optional purchase
- HDMI for local monitoring
- Compatible with leading creative apps
- NMOS support
- Reference Input (Analog black burst or Tri-level)
- macOS, Windows and Linux support
- Compatible with leading creative apps
- Three year warranty



KONA® | 4 \$1,995



3 LEGENDARY
YEAR
WARRANTY

KONA 4

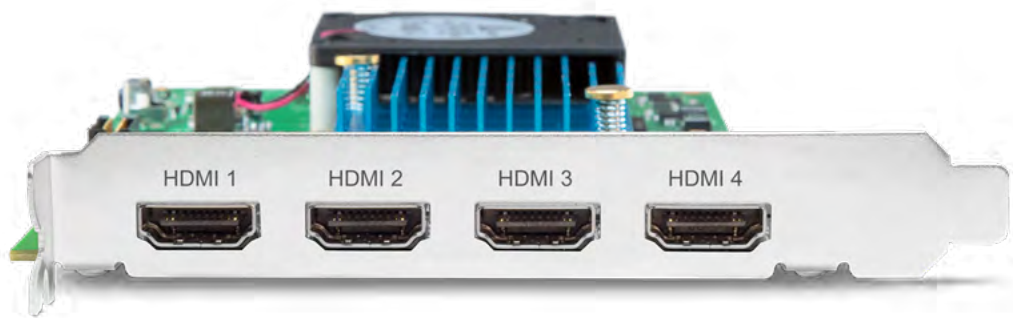
- Supports 4K and UltraHD ingest and output at frame rates up to 50/60p
- Real time up, down, cross-conversion with pristine 10-bit quality
- 3G-SDI and 1.5G-SDI formats supported
- HDMI 1.4b (UltraHD 50/60p 8-bit 4:2:0)
- HDR10 Support - HDR Infoframe metadata, in accordance with HDMI 2.0a/CTA-861.3 and HLG (Hybrid Log Gamma) support
- Supports 444 and 422 workflows
- 8-lane PCIe 2.0
- 8-ch AES/EBU, 8-ch embedded HDMI, and 16-ch embedded SDI digital audio I/O
- Extend external connectivity incl LTC, Ref and RS-422 with supplied breakout cable.
- macOS, Windows and Linux support
- Compatible with leading creative apps
- Three year warranty



K3G-Box

\$395

KONA® | HDMI \$895



KONA HDMI

- Supports simultaneous ingest of up to either 2x 4K/UltraHD, or 4x 2K/HD, at frame rates up to 50/60p
- Simultaneously capture up to four 2K/HD 60p sources
- Four full-size HDMI Inputs
- HDMI 2.0 (port 1 & 2) and HDMI 1.4b (ports 3 & 4)
- 8-lane PCIe 2.0
- Embedded HDMI audio in, up to 8 per channel (for a total of 32 possible audio channels)
- Capture stunning HDR from games and more
- macOS, Windows and Linux support
- Video4Linux and DirectShow support
- Compatible with leading creative apps
- Three year warranty



KONA® 1 \$595



3 LEGENDARY
YEAR
WARRANTY

KONA 1

- Supports 2K and HD ingest and output at frame rates up to 50/60p
- 3G-SDI and 1.5G-SDI formats supported
- PCIe 2.0 form factor
- 16-ch embedded SDI digital audio I/O
- RS-422 (for SDK developers there is also an option for low profile PCIe with internal RS422 header, rather than external connector)
- macOS, Windows and Linux support
- Compatible with leading creative apps
- Three year warranty



KONA® LHi \$1,495



KONA LHi

- Supports 2K and HD ingest and output at frame rates up to 60p
- Real time up, down, cross-conversion with pristine 10-bit quality
- 3G-SDI and 1.5G-SDI formats supported
- Component Video I/O, RS-422 Control on supplied breakout cable
- HDMI v1.3 (HD 50/60p)
- 2-ch AES/EBU, 8-ch embedded HDMI, and 8-ch embedded SDI digital audio I/O
- 2-ch balanced analog audio I/O
- Extend external connectivity incl LTC, Ref and RS-422 with supplied breakout cable.
- macOS, Windows and Linux support
- Compatible with leading creative apps
- Three year warranty



KLHi-BOX

\$349

KONA® | LHe Plus \$995



3 LEGENDARY
YEAR
WARRANTY

KONA LHe Plus

- Supports HD and SD ingest and output at frame rates up to 30p
- Real time down-conversion
- HD-SDI I/O and Component Video I/O on supplied breakout cable
- 2-ch AES/EBU, 8-ch embedded SDI digital audio I/O on supplied breakout cable
- 2-ch balanced analog audio I/O on supplied breakout cable
- Extend external connectivity incl Ref and RS-42 with supplied breakout cable.
- macOS, Windows and Linux support
- Compatible with leading creative apps
- Three year warranty



KL-BOX-LH

\$299

KONA® | Software Compatibility

KONA cards are cross-platform and compatible with a wide range of professional macOS®, Windows®, and Linux® software applications.

AJA hardware is compatible with a wide range of professional software applications on macOS, Windows, and Linux. AJA drivers and software create a seamless integration between best of class creative tools and AJA's high quality hardware that lets you focus on the work, not the technology.

View our software compatibility chart for the following categories:

Audio | Color | Dailies/Archiving | Editorial | Effects | Graphics/Virtual | Ingest/Payout | Restoration
SDI / IP Bridging | Streaming/Live Production | Test/Measure | VJ / Live Video Performance | Video Assist

[View Compatibility Chart](#)



LiveGrade

FilmLight

SOFTON



TOOLS

SpectraCal

avid.com



U-TAP

USB 3.0 Powered 3G-SDI and HDMI Capture

3rd YEAR
LEGENDARY
WARRANTY

U-TAP | SDI \$345



U-TAP SDI

- USB 3.0 host Interface
- 3G-SDI Input
- SDI Output (Looping)
- Bus powered from host
- HD/SD and scaled (USB) raster support
- 2-channel, Audio Input, 24-bit SDI embedded audio, 48 kHz sample rate
- UVC/UAC capture and wide application compatibility. No third party driver required.
- Three year warranty

[View Compatibility Chart](#)



U-TAP | HDMI \$345



U-TAP HDMI

- USB 3.0 host Interface
- HDMI Input
- Bus powered from host
- HD/SD and scaled (USB) raster support
- 2-channel, Audio Input, 24-bit SDI embedded audio, 48 kHz sample rate
- UVC/UAC capture and wide application compatibility. No third party driver required.
- Three year warranty

[View Compatibility Chart](#)



T-TAP[®] Thunderbolt™ Powered SDI and HDMI Output

3rd LEGENDARY
YEAR
WARRANTY

T-TAP[®] \$295



Size : 74.93 x 1778 x 57.92 mm

T-TAP

- Supports 2K/HD/SD 10-bit output over SDI and HDMI at frame rates up to HD 60p
- 8-channel, 24-bit SMPTE-259 SDI embedded audio, 48 kHz sample rate, synchronous
- 8-channel, 24-bit HDMI embedded audio, 48 kHz sample rate, synchronous
- Connect to Mac and PC with Thunderbolt
- Compact and pocketable at 0.2 lb (0.1 kg)
- No power cable required; 5V Thunderbolt bus powered; 6.5W max
- macOS and Windows support
- Three year warranty

T-TAP[®] | Software Compatibility

T-TAPs are cross-platform and compatible with a wide range of professional macOS®, Windows®, and Linux® software applications.

AJA hardware is compatible with a wide range of professional software applications on macOS, Windows, and Linux.

AJA drivers and software create a seamless integration between best of class creative tools and AJA's high quality hardware that lets you focus on the work, not the technology.

View our software compatibility chart for the following categories:

Audio | Color | Dailies/Archiving | Editorial | Effects | Graphics/Virtual | Ingest/Playout
SDI / IP Bridging | Streaming/Live Production | Test/Measure | VJ / Live Video Performance | Video Assist

[View Compatibility Chart](#)



HDR | Image Analyzer

3 LEGENDARY
YEAR
WARRANTY

HDR Waveform, Histogram and Vectorscope Monitoring

HDR Image Analyzer fuses AJA's proven audio and video I/O technology with Colorfront's powerful Colorfront Engine™. The sleek 1RU device delivers a comprehensive toolset for monitoring and analyzing HDR standards including Hybrid Log Gamma (HLG) and Perceptual Quantizer (PQ) for up to 8K/UltraHD2 workflows.

HDR Image Analyzer and HDR Image Analyzer 12G

- UltraHD UI for native-resolution picture display including PQ support for HDR capable displays.
- Configurable layouts allow you to put the tool you need, in the window you need it
- Support for display referred SDR (Rec.709), HDR ST2084/PQ and HLG analysis
- Support for scene referred ARRI, Canon, Panasonic, RED and Sony camera color spaces
- Precision CIE graph, vectorscope, waveform, and histogram support
- False color mode to easily spot out of gamut/out of brightness pixels
- NIT levels and audio phase metering
- Line mode to focus a region of interest onto a single horizontal or vertical line
- File base error logging with timecode
- Three year warranty



HDR | Image Analyzer 12G \$19,995

Size : 436.88 x 429.26 x 43.18 mm

4x 12G-SDI Bidirectional I/O for up to 8K/UltraHD2 60p Input and Pass-through (except in 8K/UltraHD2 mode)



HDR | Image Analyzer \$15,995

Size : 436.88 x 429.26 x 43.18 mm

4x 3G-SDI inputs and outputs for up to 4K/UltraHD 60p Input and Pass-through

HDR | colorfront **||>>>**

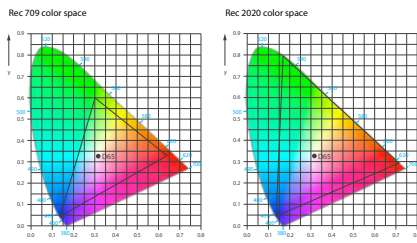
Real Time HDR/WCG Transformations, Multi-Channel Converter and Frame Sync **\$7,995**

Powered by Colorfront Engine™ proprietary video processing algorithms, with real time parametric controls for HDR transforms, color correction and SDR Preview of HDR transforms for Single Master HDR workflows; FS-HDR also serves as a full, 1-channel up, down, cross-converter for 4K/UltraHD/2K/HD and in 4-channel mode, offers four simultaneous and independent channels of 2K/HD HDR and SDR transformations. Ganged operation controls multiple FS-HDRs supporting up to 8K, a new Colorfront Engine Film mode, new BBC LUTs, Dynamic Multi-Channel LUT capabilities, ACES support, the ability to upload custom 3D LUTs, and more.



Size : 444.5 x 406.4 x 44.45 mm

Dynamic Range/Color Gamut



Modern cameras are inherently HDR capable with their wide dynamic ranges available from the sensor on, and for live events and broadcasts, it's crucial to translate their Log and Gamut capabilities to the accepted standards

www.aja.com

Input Formats

Input Formats:

- SDR BT.709 100 Nits
- PQ BT.2020 1000 Nits
- PQ P3D65 1000 Nits
- Hybrid Log Gamma BT.2100
- Hybrid Log Gamma BT.709
- HLG Extended BT.2100
- Sony® S-Log3 S-Gamut3
- Sony S-Log3 S-Gamut3 Cine
- Sony S-Log3 BT.2020
- ARRI Log C Wide Gamut
- Panasonic® V-Log
- RED Log3G10 Wide Gamut
- Canon Log 2
- Canon Log 3
- ACEScct

HDR Workflows for UltraHD/HD

- Single channel mode for 4K/UltraHD/2K/HD including down-conversion to HD HDR or SDR
- Four channel mode for multi-channel 2K/HD HDR processing simultaneously
- Colorfront Engine Live and Film Modes
- BBC HLG LUT mode with an array of BBC transformations for HLG (Hybrid Log Gamma) including Scene-Referred and Display-Referred conversions
- Dynamic LUT mode for third party software integration
- User LUT mode for importing 3D .cube LUTs
- ASC CDL support
- Auto HDR Signaling over SDI for SDR/PQ/HLG
- PQ output control from 48 to 4000 Nits

Output Formats

- From multi-channel HD to true 4K, FS-HDR carries your HDR / SDR video over 3G-SDI, optional fiber or 12G-SDI to wherever it needs to go; from switchers, routers, monitors, to huge LED displays and more. You can even convert your source to S-Log3, ARRI Log C and even ACEScct for use further along the chain.
- SDR BT.709 100 Nits
 - PQ BT.2020 1000 Nits
 - Hybrid Log Gamma BT.2100
 - Hybrid Log Gamma BT.709
 - HLG Extended
 - Sony SLog3 S-Gamut3
 - Sony SLog3 BT.2020
 - ARRI Log C Wide Gamut
 - ACEScct

FS 4K/2K/HD/SD Frame Sync and Conversion

5 LEGENDARY
YEAR
WARRANTY

FS 4 \$4,995

4-Ch 2K/HD/SD or 1-Ch 4K/UltraHD Frame Sync and Up, Down, Cross-Converter



Size : 444.5 x 406.4 x 44.45 mm

FS4

- Four Independent 2K, HD, or SD Video Processors
- One 4K, UltraHD, 2K, HD, or SD Video Processor
- Up, down, cross-conversion
- 4x 3G-SDI In and 4x 3G-SDI Out
- 12G-SDI (HD-BNC) I/O with Optional SFPs
- 12G-SDI Fiber I/O with Optional SFPs
- Quadrant (Square Division) or 2SI (Two Sample Interleave) 4K/UltraHD input pixel mapping
- 1x 3G-SDI and 1x HDMI Monitor Outputs
- 16-ch embedded audio over SDI per port, 8-ch AES In and Out, 64-ch MADI Fiber and 64-ch MADI Coax I/O
- Five year warranty

FS 2 \$3,995

2-Ch HD/SD Frame Sync and Up, Down, Cross-Converter



Size : 438.15 x 368.3 x 44.45 mm

FS2

- 2x 3G-SDI Inputs
- 2x Fiber 3G-SDI Inputs (optional)
- HD component YPbPr, SMPTE-274 (3x BNC) Input
- HDMI I/O
- 2x 3G-SDI Outputs
- 2x Fiber 3G-SDI Outputs (optional)
- HD component YPbPr, SMPTE-274 (3x BNC) Output
- Up, down, cross-conversion
- 16-channel, 24-bit SMPTE-272/299 SDI embedded audio, 48 kHz sample rate, synchronous I/O
- 16-channel, 24-bit AES/EBU audio, 48 kHz sample rate, synchronous or nonsynchronous, internal sample rate conversion (8x XLR via 25-pin breakout cable)
- Five year warranty

FS 1-X \$3,495

HD/SD Frame Sync and Up, Down, Cross-Converter with linear Frame Rate Converter



Size : 482.6 x 406.4 x 44.45 mm

5 LEGENDARY
YEAR
WARRANTY

FS1-X

- 2x 3G-SDI Inputs
- 2x Fiber 3G-SDI Inputs (optional)
- HD component YPbPr, SMPTE-274 (3x BNC) Input
- HDMI I/O
- 2x 3G-SDI Outputs
- 2x Fiber 3G-SDI Outputs (optional)
- HD component YPbPr, SMPTE-274 (3x BNC) Output
- Composite SD Analog I/O
- 64-ch MADI Fiber and 64-Ch MADI Coax I/O
- 8-channel balanced analog I/O, DB-25F 25-pin Power connector (Tascam pinout)
- 16-channel AES/EBU I/O (BNC), DB-25F 25-pin connector
- Five year warranty

FS1-X with FRC Option

High-quality, motion adaptive linear Frame Rate Converter option. When the factory installed Frame Rate Converter (FRC) option is present and active, conversions between different frame rate families are supported.

FS 1 \$2,995

1-Ch HD/SD Frame Sync and Up, Down, Cross-Converter



Size : 438.1mm x 317.5mm x 44.4mm

FS1

- 2x 3G-SDI Inputs
- 2x 3G-SDI Outputs
- HD/SD component YPbPr, SMPTE-274 (3x BNC) I/O
- Y/C (S-Video) I/O
- Composite SD Analog I/O
- Up, down, cross-conversion
- 8-channel, 24-bit D/A analog audio, 48 kHz sample rate, balanced (8x XLR via 25-pin breakout cable) In
- 8-channel, 24-bit D/A analog audio, 48 kHz sample rate, balanced (8x XLR via 25-pin breakout cable) out
- Five year warranty

KUMO® Compact 12G-SDI and 3G-SDI Routers

5 LEGENDARY
YEAR
WARRANTY

KUMO compact routers offer flexible video configuration with ease of control with the CP range of control panels or via the network. Adapt as your needs expand, from 3G to 12G and up to 64 inputs and outputs.

KUMO routers can be configured for ganged dual and quad port routing, allowing users to group together multiple inputs and outputs for dual-link, 4K/UltraHD, and with 12G-SDI models, 8K workflows.



KUMO 6464-12G \$8,995

Size : 441.96 x 39.12 x 177.8 mm



KUMO 6464 \$7,995

Size : 441.96 x 39.12 x 177.8 mm



KUMO 3232-12G \$3,995

Size : 441.96 x 39.12 x 88.9 mm



KUMO 3232 \$3,495

Size : 441.96 x 39.12 x 88.9 mm



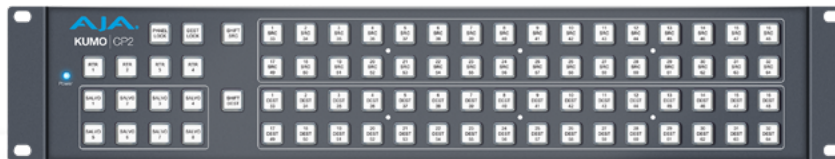
KUMO 1616-12G \$2,495

Size : 441.96 x 39.12 x 44.45 mm



KUMO 1616 \$1,995

Size : 441.96 x 39.12 x 44.45 mm



KUMO CP 2 \$895

Size : 441.96 x 33.02 x 88.9 mm



KUMO 1604 \$1,395

Size : 441.96 x 39.12 x 44.45 mm



KUMO CP \$595

Size : 441.96 x 33.02 x 44.45 mm

Mini-Converters

5 LEGENDARY
YEAR
WARRANTY

The Power to Convert and Deliver

From broadcast, production, to post and live events, AJA Mini-Converters offer the most complete range of compact, stand-alone conversion and infrastructure solutions, designed to the highest standards in reliability and quality. Our converters cover a full range of 4K, HD, and SD capabilities to meet your needs.

AJA Mini-Matrix: Converter Search Software

www.aja.com/software/mini-matrix



Hi5-12G \$795
12G-SDI to HDMI 2.0 Mini-Converter



Hi5-12G-R \$995
HDMI 2.0 to 12G-SDI Mini-Converter, with Fiber Rx SFP



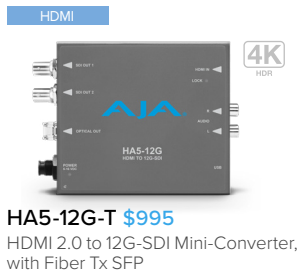
Hi5-12G-TR \$1195
HDMI 2.0 to 12G-SDI Mini-Converter, with Fiber TR SFP



Hi5-4K-Plus \$595
4K/UltraHD (4x 3G-SDI) to full HDMI 2.0 Mini-Converter



HA5-12G \$795
HDMI 2.0 to 12G-SDI Mini-Converter



HA5-12G-T \$995
HDMI 2.0 to 12G-SDI Mini-Converter, with Fiber Tx SFP



HA5-4K \$595
4K/UltraHD HDMI to 4K/UltraHD (4x 3G-SDI) Mini-Converter

HDMI



Hi5-Plus \$395

3G-SDI to HDMI Mini-Converter
with Embedded Audio

HDMI



HA5-Plus \$395

HDMI to 3G-SDI Mini-Converter
with Embedded Audio

HDMI



Hi5-3G \$595

3G-SDI/Dual Link SDI to HDMI 1.3a
Video and Audio Mini-Converter

HDMI



Hi5-3D \$495

Dual HD-SDI Multiplexer to HDMI 1.4a
and SDI Video and Audio Mini-Converter

HDMI



Hi5-Fiber \$695

3G-SDI over Fiber to HDMI Video
and Audio Mini-Converter

HDMI



HA5-Fiber \$695

HDMI to 3G-SDI over Fiber Video
and Audio Mini-Converter

HDMI



Hi5 \$345

HD/SD-SDI to HDMI Mini-Converter
with Embedded Audio

HDMI



HA5 \$345

HDMI to HD-SDI Mini-Converter
with Embedded Audio

HDBaseT



HB-R-SDI \$595

HDBaseT to 3G-SDI Mini-Converter

HDBaseT



HB-T-SDI \$595

3G-SDI to HDBaseT Mini-Converter

HDBaseT



HB-R-HDMI \$395

HDBaseT to HDMI Mini-Converter

HDBaseT



HB-T-HDMI \$395

HDMI to HDBaseT Mini-Converter

HDBaseT



RovoRx-SDI \$995

HDBaseT to 6G/3G-SDI and HDMI
Converter with POH, Genlock

HDBaseT



RovoRx-HDMI \$495

HDBaseT to HDMI Converter with PoH

LUT-box



LUT-box \$695

In-line Color Transform

Control



Mini-Connect \$345

Control Aja ROI Mini-Converters
via Ethernet

SCALING

**HDP3 \$695**

3G-SDI to DVI-D and Audio Converter

SCALING

**UDC \$695**

Up, Down, Cross-Converter

SCALING

**4K2HD \$795**

4K/UltraHD to HD Down-Converter

SCALING

**HD10MD4 \$995**

HD/SD-SDI to SDI/Analog Down-Converter

5 LEGENDARY
YEAR
WARRANTY

INFRASTRUCTURE

**12GDA \$495**12G/HD/SD-SDI Reclocking
Distribution Amplifier

INFRASTRUCTURE

**12GM \$895**

12G-SDI to/from SDI Muxer/Demuxer

INFRASTRUCTURE

**3G-AM \$795**3G-SDI 8-Channel AES
Embedder/Disembedder

INFRASTRUCTURE

**3G-AMA \$795**3G-SDI Analog Audio
Embedder/Disembedder

INFRASTRUCTURE

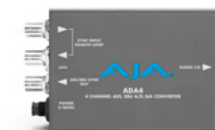
**3GDA \$395**1x6 3G/HD/SD Reclocking
Distribution Amplifier

INFRASTRUCTURE

**3GM \$495**

3G/1.5G HD-SDI Multiplexer

INFRASTRUCTURE

**ADA4 \$390**4-Channel Bidirectional
Audio A/D and D/A Converter

INFRASTRUCTURE

**C10DA \$175**

Analog Video 1x6 Distribution Amplifier

INFRASTRUCTURE

**GEN10 \$345**

HD/SD Sync Generator

INFRASTRUCTURE

**HD5DA \$195**1x4 HD/SD-SDI
Distribution Amplifier/Repeater

INFRASTRUCTURE

**FS-Mini \$695**

3G/HD/SD-SDI Utility Frame Synchronizer

ANALOG

**HD10AVA \$695**HD/SD Analog Composite or Component
Video and 4-Channel Analog Audio to
SD/HD-SDI with Embedded Audio

ANALOG



HD10CEA \$695
HD/SD-SDI to Analog Audio/Video

ANALOG



V2Analog \$345
HD/SD-SDI to Analog Video Converter

ANALOG



V2Digital \$345
Analog Video to HD/SD-SDI Converter

ANALOG



HD10A-Plus \$695
HD Analog to HD-SDI Converter

SCAN CONVERT



ROI-DVI \$995
DVI to 3G-SDI Scan Converter
with Region of Interest

SCAN CONVERT



ROI-HDMI \$995
HDMI to 3G-SDI Scan Converter
with Region of Interest

SCAN CONVERT



ROI-DP \$995
Display Port to 3G-SDI Scan Converter
with Region of Interest

SCAN CONVERT



ROI-SDI \$995
3G-SDI to HDMI/3G-SDI Scan Converter
with Region of Interest

IP



IPT-10G2-HDMI \$1295
HDMI Video and Audio to SMPTE ST 2110 IP
Converter with Hitless Switching

IP



IPT-10G2-SDI \$1295
3G-SDI Video and Audio to SMPTE ST 2110 IP
Converter with Hitless Switching

IP



IPR-10G2-HDMI \$1295
SMPTE ST 2110 IP Video and Audio to
Converter with Hitless Switching

IP



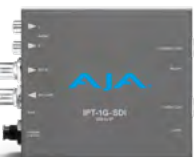
IPR-10G2-SDI \$1295
SMPTE ST 2110 IP Video and Audio to
3G-SDI HDMI Converter with Hitless Switching

IP



IPT-1G-HDMI \$995
HDMI Video and Audio to
JPEG 2000 IP Converter

IP



IPT-1G-SDI \$995
3G-SDI Video and Audio to
JPEG 2000 IP Converter

IP



IPR-1G-HDMI \$795
JPEG 2000 IP Video and Audio
to HDMI Converter

IP



IPR-1G-SDI \$795
JPEG 2000 IP Video and Audio
to 3G-SDI Converter

ACCESSORIES



CMP \$99
Converter Mounting Plate

ACCESSORIES



DRM \$590
Mini-Converter Rackmount Frame

ACCESSORIES



DRM FCP \$100
Faceplate for DRM

ACCESSORIES



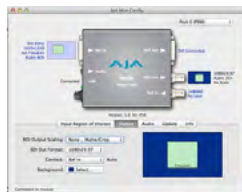
DRM- P/S ASSY \$250
DRM Spare Power Supply

ACCESSORIES



RMB \$7
Rackmount Bracket

ACCESSORIES



AJA Mini-Config
Free Visual Configuration
and Control Software vvv

ACCESSORIES



DWP-U-R1 \$40
Universal Power Supply

ACCESSORIES



PWR-CABLE \$65
P-TAP to 2x AJA Mini-Converter
Power Connectors

ACCESSORIES



P-TAP-CBL \$45
P-Tap to AJA Mini-Converter
Power Cable

ACCESSORIES



AJA Mini-Matrix
Find the Right AJA Converter
for Any Situation

FiDO – Optical Fiber Converters

5 LEGENDARY
YEAR
WARRANTY

The Power to Convert and Deliver

FiDO Mini-Converters offer unmatched flexibility and cost efficiency for 12G-SDI, 6G-SDI, and 3G-SDI Fiber conversion, allowing for long cable runs up to 10km for single mode FiDOs and up to 700 m (2296 ft) for OM4 and 300 m (984 ft) for OM3 multi-mode fiber optic cables when using Multi-Mode models or SFPs. Choose LC, ST, or SC connectors, depending on the converter model. CWDM SFP options are available. Configure as appropriate with the SFP Configurator. FiDO converters use compact, low profile, rugged enclosures that work well in tight spaces around and behind equipment racks, displays, in trucks and on camera.

OPTICAL FIBER



FiDO-T-12G \$785

1-Channel 12G-SDI to Single Mode LC Fiber Transmitter, with SDI Loop Out

OPTICAL FIBER



FiDO-R-12G \$785

1-Channel Single Mode LC Fiber to 12G-SDI Receiver, with Dual SDI Outputs

OPTICAL FIBER



FiDO-2T-12G \$1,325

2-Channel 12G-SDI to Single Mode LC Fiber Transmitter

OPTICAL FIBER



FiDO-2R-12G \$1,325

2-Channel Single Mode LC Fiber to 12G-SDI Receiver

OPTICAL FIBER



FiDO-TR-12G \$1,325

1-Channel 12G-SDI/LC Single Mode LC Fiber Transceiver

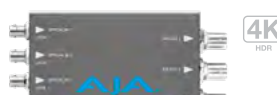
OPTICAL FIBER



FiDO-4T-ST \$1,495

4-Channel 3G-SDI Single Mode ST Fiber Transmitter

OPTICAL FIBER



FiDO-4R-ST \$1,495

4-Channel 3G-SDI Single Mode ST Fiber to 3G-SDI Receiver

OPTICAL FIBER



FiDO-4T-X \$2,685

4-Channel 3G-SDI to Single Mode LC Fiber Transmitter for CWDM SFPs
(Includes both CWDM SFP Modules)

OPTICAL FIBER



FiDO-4T \$1,495

4-Channel 3G-SDI to Single Mode LC Fiber Transmitter

OPTICAL FIBER



FiDO-4R \$1,495

4-Channel Single Mode LC Fiber to 3G-SDI Receiver

OPTICAL FIBER



FiDO-4T-MM \$1,985

4-Channel 3G-SDI to Multi-Mode LC Fiber Transmitter

OPTICAL FIBER



FiDO-4R-MM \$1,985

4-Channel Multi-Mode LC Fiber to 3G-SDI Receiver

OPTICAL FIBER



FiDO-T \$445

1-Channel 3G-SDI to Single Mode LC Fiber Transmitter, with SDI Loop Out

OPTICAL FIBER



FiDO-R \$445

1-Channel Single Mode LC Fiber to 3G-SDI Receiver, with Dual SDI Outputs

OPTICAL FIBER



FiDO-2T \$645

2-Channel 3G-SDI to Single Mode LC Fiber Transmitter

OPTICAL FIBER



FiDO-2R \$645

2-Channel Single Mode LC Fiber to 3G-SDI Receiver

OPTICAL FIBER



FiDO-TR \$645

1-Channel 3G-SDI/LC Single Mode LC Fiber Transceiver

OPTICAL FIBER



FiDO-2T-X \$1,240

2-Channel 3G-SDI to Single Mode LC Fiber Transmitter for CWDM SFPs
(Includes one CWDM SFP module)

OPTICAL FIBER



FiDO-T-MM \$690

1-Channel 3G-SDI to Multi-Mode LC Fiber Transmitter, with SDI Loop Out

OPTICAL FIBER



FiDO-R-MM \$690

1-Channel Multi Mode LC Fiber to 3G-SDI Receiver, with Dual SDI Outputs

OPTICAL FIBER



FiDO-2T-MM \$890

2-Channel 3G-SDI to Multi-Mode LC Fiber Transmitter

OPTICAL FIBER



FiDO-2R-MM \$890

2-Channel Multi-Mode LC Fiber to 3G-SDI Receiver

OPTICAL FIBER



FiDO-TR-MM \$890

1-Channel 3G-SDI/LC Multi-Mode LC Fiber Transceiver

OPTICAL FIBER



FiDO-T-SC \$445

1-Channel 3G-SDI to Single Mode SC Fiber Transmitter, with SDI Loop Out

OPTICAL FIBER



FiDO-R-SC \$445

1-Channel Single Mode SC Fiber to 3G-SDI Receiver, with Dual SDI Outputs

OPTICAL FIBER



FiDO-R-ST \$445

1-Channel Single Mode ST Fiber to 3G-SDI Receiver, with Dual SDI Outputs

OPTICAL FIBER



FiDO-T-ST \$445

1-Channel 3G-SDI to Single Mode ST Fiber Transmitter, with SDI Loop Out

openGear Cards and Rackframe

For critical broadcast applications, AJA openGear compatible converter cards, with DashBoard support, provide the highest levels of quality and reliability for use in OG frames including the AJA OG-X-FR.



OG-X-FR \$1449

openGear Compatible Rackframe

SCAN CONVERT



OG-ROI-DVI \$995

openGear DVI to 3G-SDI Scan Converter with Region of Interest

SCAN CONVERT



OG-ROI-HDMI \$995

openGear HDMI to 3G-SDI Scan Converter with Region of Interest

HDMI



OG-Hi5-4K-Plus \$595

openGear 4K/UltraHD (4x 3G-SDI) to full HDMI 2.0 Converter

HDMI



OG-HA5-4K \$595

openGear 4K/UltraHD HDMI to 4K/UltraHD (4x 3G-SDI) Converter

SCALING



OG-4K2HD \$795

openGear 4K/UltraHD to 3G-SDI and HDMI Down-Converter

SCALING



OG-UDC \$695

openGear HD/SD Up, Down, Cross-Converter

INFRASTRUCTURE



OG-FS-Mini \$695

openGear 3G/HD/SD-SDI Utility Frame Synchronizer

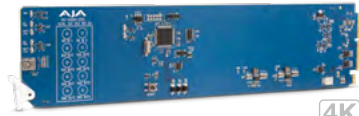
INFRASTRUCTURE



OG-3G-AMD \$795

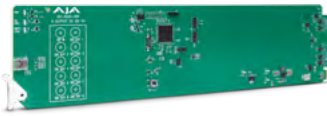
openGear 3G-SDI 8-Channel 24-bit AES Embedder/Disembedder

INFRASTRUCTURE



OG-12GDA-2x4 \$695
openGear Dual 2x4 12G-SDI Reclocking DA

INFRASTRUCTURE



OG-3GDA-1x9 \$495
openGear 1x9 3G-SDI Reclocking DA

INFRASTRUCTURE



OG-3GDA-2x4 \$550
openGear 2x4 3G-SDI Reclocking DA

INFRASTRUCTURE



OG-3G-AMA \$795
openGear 3G-SDI Analog Audio Embed/Disembed

OPTICAL FIBER



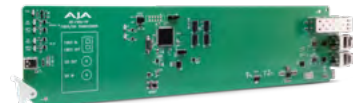
OG-FiDO-T \$445
openGear 1-Channel 3G-SDI to Single Mode LC Fiber Transmitter, with SDI Loop Out

OPTICAL FIBER



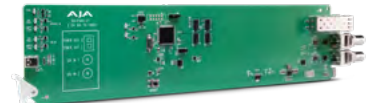
OG-FiDO-R \$445
openGear 1-Channel Single Mode LC Fiber to 3G-SDI Receiver

OPTICAL FIBER



OG-FiDO-TR \$645
openGear 1-Channel 3G-SDI/LC Single Mode LC Fiber Transceiver*

OPTICAL FIBER



OG-FiDO-2T \$645
openGear 2-Channel 3G-SDI to Single Mode LC Fiber Transmitter

OPTICAL FIBER



OG-FiDO-2R \$645
openGear 2-Channel 3G-SDI to Single Mode LC Fiber Receiver

OPTICAL FIBER



OG-FiDO-2T-X \$1,240
openGear 2-Channel 3G-SDI to Single Mode LC Fiber Transmitter for CQDM
(Includes CWDM SFP module)

OPTICAL FIBER



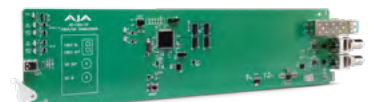
OG-FiDO-T-MM \$690
openGear 1-Channel 3G-SDI to Multi-Mode LC Fiber Transmitter

OPTICAL FIBER



OG-FiDO-R-MM \$690
openGear 1-Channel Multi-Mode LC Fiber to 3G-SDI Receiver

OPTICAL FIBER



OG-FiDO-TR-MM \$890
openGear 1-Channel 3G-SDI/LC Multi-Mode LC Fiber Transceiver

OPTICAL FIBER



OG-FiDO-2T-MM \$890
openGear 2-Channel 3G-SDI to Multi-Mode LC Fiber Transmitter

OPTICAL FIBER



OG-FiDO-2R-MM \$890
openGear 2-Channel Multi-Mode LC Fiber to 3G-SDI Receiver

CORVID

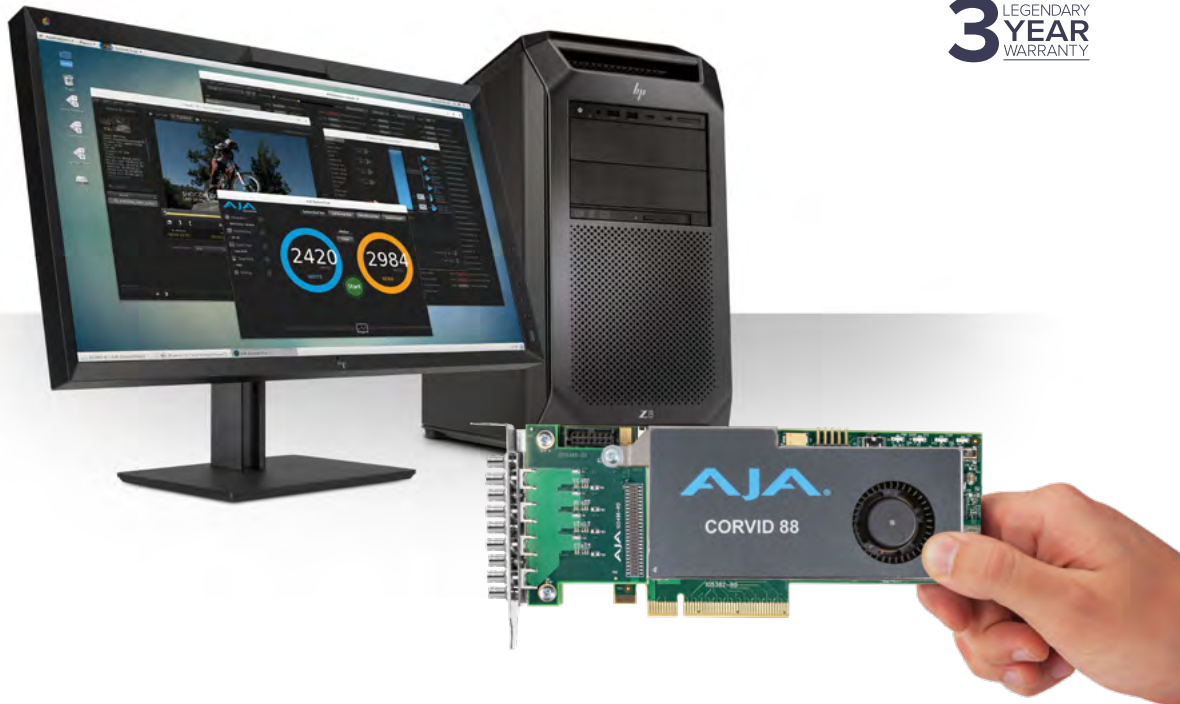
3 LEGENDARY
YEAR
WARRANTY

PCIe I/O Solutions for Development Partners.

The Corvid lineup offers OEM Developer partners a wealth of options when used with AJA's powerful SDK on Windows, macOS, and Linux.

Learn More: www.aja.com/category/developer

Apply today: www.aja.com/developer/request



Corvid 88 \$2,795

8-lane PCIe 2.0 card for 8/10-bit YCbCr or 12-bit RGB with simultaneous 4K in and out or eight independent mixed channel I/O. Low Profile and Fanless versions available.



Corvid 44 12G \$2,995

8-lane PCIe 3.0 for 8/10-bit YCbCr or 12-bit RGB with 8K in or out or 4K independent mixed channel 12G-SDI I/O. HD-BNCs. Low Profile and Fanless versions available.



Corvid 44 12G BNC \$2,895

8-lane PCIe 3.0 for 8/10-bit YCbCr or 12-bit RGB with 8K in or out or 4K independent mixed channel 12G-SDI I/O. Full-sized BNCs. Fanless version available.



Corvid 44 \$1,895

8-lane PCIe 2.0 for 8/10-bit YCbCr or 12-bit RGB with four independent mixed channel I/O or single 4K I/O. Low Profile and Fanless versions available.



Corvid 44 BNC \$1,895

8-lane PCIe 2.0 for 8/10-bit YCbCr or 12-bit RGB with four independent mixed channel I/O or single 4K I/O. Full-sized BNCs. Fanless version available.



Corvid 22 \$1,395

4-lane PCIe 2.0 for 8/10-bit uncompressed with two channels I/O digital 3G-SDI I/O.



Corvid 24 \$1,895

4-lane PCIe 2.0 8/10-bit for four 3G-SDI channels of digital I/O, bypass relays for continuation of SDI input signal to SDI output in event of signal failure.



Corvid HEVC \$4,995

4K or multi-channel HD, 8-lane PCIe 2.0 HEVC encoding card supporting up to 4K 60p video input as well as file to file encoding. Slot and ATX6 powered versions available.

HDBaseT Camera System

3 LEGENDARY
YEAR
WARRANTY

RovoCam \$2,495

Integrated UltraHD/HD Camera with HDBaseT



Size : 71.12 x 149.86 x 91.44 mm

RovoCam Features

- UltraHD up to 29.97p or high frame rate HD support up to 60p
- Sony back illuminated 1/2.3 type 8.9 megapixel CMOS sensor
- Video, audio, control, and power over standard Cat 5e/6 cable
- Three year warranty

RovoControl Software Features

- Control and configure software for RovoCam
- When RovoCam is in UltraHD Mode, RovoControl's unique ePTZ feature allows the user to select a 1080p HD ROI (Region of Interest) frame from the UltraHD raster for 1080p 50 or 1080p 59.94 output with full Pan, Tilt and Zoom capabilities.
- Exposure control for simple camera control in the GUI
- Preset command and control with global, camera and ePTZ
- Import/Export of settings for sharing setups and configurations
- High DPI UI mode for GUI on high rez displays
- Crosshair selector for refined Spot AE and Spot Focus control
- Zoom control

RovoRx | SDI \$995

UltraHD/HD HDBaseT Receiver to 6G/3G-SDI and HDMI Frame Sync w/ PoH, Genlock



RovoRx-SDI Features

- 4x 6G/3G-SDI UltraHD/HD HDMI outputs
- 1x UltraHD/HD HDMI output
- DA Mode for distribution needs of HDBaseT sources
- 1x RCA stereo audio output
- 1x USB for firmware upgrades
- 1x RS-232 for RovoCam control
- 1x HDBaseT connector (RJ-45)
- Five year warranty

RovoRx | HDMI \$495

UltraHD/HD HDBaseT Receiver to HDMI with PoH



RovoRx-SDI Features

- 1x UltraHD/HD HDMI output
- 1x RCA stereo audio output
- 1x USB for firmware upgrades
- 1x RS-232 for RovoCam control
- 1x HDBaseT connector (RJ-45)
- Five year warranty

About AJA Video Systems, Inc

Since 1993, AJA Video has been a leading manufacturer of video interface and conversion solutions, bringing high quality, cost effective digital video products to the professional, broadcast and postproduction markets. AJA products are designed and manufactured at our facilities in Grass Valley, California, and sold through an extensive sales channel of resellers and systems integrators around the world. For further information, please see our website at www.aja.com.

AJA Video Systems, Inc.

Grass Valley, California

www.aja.com • sales@aja.com • support@aja.com

www.aja.com

