

DJ-KONTROL 4

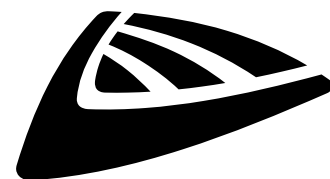


ENGLISH Operation Manual

Other languages can be downloaded from:
WWW.JB-SYSTEMS.EU



Version: 1.0



JB SYSTEMS



EN - DISPOSAL OF THE DEVICE

Dispose of the unit and used batteries in an environment friendly manner according to your country regulations.

FR - DÉCLASSER L'APPAREIL

Débarrassez-vous de l'appareil et des piles usagées de manière écologique Conformément aux dispositions légales de votre pays.

NL - VERWIJDEREN VAN HET APPARAAT

Verwijder het toestel en de gebruikte batterijen op een milieuvriendelijke manier conform de in uw land geldende voorschriften.

DU - ENTSORGUNG DES GERÄTS

Entsorgen Sie das Gerät und die Batterien auf umweltfreundliche Art und Weise gemäß den Vorschriften Ihres Landes.

ES - DESHACERSE DEL APARATO

Reciclar el aparato y pilas usadas de forma ecologica conforme a las disposiciones legales de su país.

PT - COMO DESFAZER-SE DA UNIDADE

Tente reciclar a unidade e as pilhas usadas respeitando o ambiente e em conformidade com as normas vigentes no seu país.

OPERATION MANUAL

Thank you for buying this JB Systems® product. To take full advantage of all possibilities, please read these operating instructions very carefully.

FEATURES

- Professional 4 channel MIDI controller for DJs
- Sturdy metal housing
- Comes bundled with the latest version of VirtualDJ LE, the ultimate DJ-software that can even mix video and karaoke clips!
- 8 big soft-touch buttons for Cue points, Loops, Samples, Slicer Effect and effect settings adjustment.
- Touch sensitive scratch wheels with colored backlight (the color matches the active deck in Virtual DJ)
- Mixer:
 - 3band equalizer + extra filter adjustment knob
 - Microphone input
 - PFL/mix headphones output
 - Balanced XLR (+ unbalanced cinch) master outputs
 - Independent Booth monitor output (cinch)
 - Record output (cinch)
 - 2 Stereo Line inputs (cinch) to connect external sources.
- Thanks to standard MIDI-communication this controller can also be used with any MIDI DJ-software
- Can be used on any modern laptop or PC, running Windows® XP/Vista/7/8/10 or Mac® OSX

BEFORE USE

- Before you start using this unit, please check if there's no transportation damage. Should there be any, do not use the device and consult your dealer first.
- **Important:** This device left our factory in perfect condition and well packaged. It is absolutely necessary for the user to strictly follow the safety instructions and warnings in this user manual. Any damage caused by mishandling is not subject to warranty. The dealer will not accept responsibility for any resulting defects or problems caused by disregarding this user manual.
- Keep this booklet in a safe place for future consultation. If you sell the fixture, be sure to add this user manual.
- To protect the environment, please try to recycle the packing material as much as possible.

Check the contents:

Check that the carton contains the following items:

- USB Midi Controller
- USB Cable
- Software CD-ROM with License code for VirtualDJ LE

SAFETY INSTRUCTIONS:



CAUTION
RISK OF ELECTRIC SHOCK
DO NOT OPEN



CAUTION: To reduce the risk of electric shock, do not remove the top cover. No user-serviceable parts inside. Refer servicing to qualified service personnel only.



The lightning flash with arrowhead symbol within the equilateral triangle is intended to alert the user or the presence of un-insulated “dangerous voltage” within the product’s enclosure that may be of sufficient magnitude to constitute a risk of electric shock.



The exclamation point within the equilateral triangle is intended to alert the user to the presence of important operation and maintenance (servicing) instructions in the literature accompanying this appliance.



This symbol means: indoor use only



This symbol means: Read instructions



This symbol means: Safety Class III appliance

- To prevent fire or shock hazard, do not expose this appliance to rain or moisture.
- To avoid condensation to be formed inside, allow the unit to adapt to the surrounding temperatures when bringing it into a warm room after transport. Condense sometimes prevents the unit from working at full performance or may even cause damages.
- This unit is for indoor use only.
- Don't place metal objects or spill liquid inside the unit. No objects filled with liquids, such as vases, shall be placed on this appliance. Electric shock or malfunction may result. If a foreign object enters the unit, immediately disconnect the mains power.
- No naked flame sources, such as lighted candles, should be placed on the appliance.
- Don't cover any ventilation openings as this may result in overheating.
- Prevent use in dusty environments and clean the unit regularly.
- Keep the unit away from children.
- Inexperienced persons should not operate this device.
- Maximum save ambient temperature is 40°C. Don't use this unit at higher ambient temperatures.
- Minimum distances around the apparatus for sufficient ventilation is 5cm.
- Always unplug the unit when it is not used for a longer time or before you start servicing.
- In the event of serious operating problems, stop using the appliance and contact your dealer immediately.
- Please use the original packing when the device is to be transported.
- Due to safety reasons it is prohibited to make unauthorized modifications to the unit.

INSTALLATION GUIDELINES:

- Install the unit in a well-ventilated location where it will not be exposed to high temperatures or humidity.
- Placing and using the unit for long periods near heat-generating sources such as amplifiers, spotlights, etc. will affect its performance and may even damage the unit.
- When installed in a booth or flight case, please make sure to have good ventilation to improve heat evacuation of the unit.
- To avoid condensation to be formed inside, allow the unit to adapt to the surrounding temperatures when bringing it into a warm room after transport. Condense sometimes prevents the unit from working at full performance.

CLEANING THE APPLIANCE:

Clean by wiping with a polished cloth slightly dipped with water. Avoid getting water inside the unit. Do not use volatile liquids such as benzene or thinner which will damage the unit.

CONNECTIONS

Please follow the connection diagram below to connect the “DJ-KONTROL4”:

- Use the supplied USB-cable to connect the controller via the USB-connector to your computer.
- Put the power switch on the rear of the unit to [USB 5V]. The unit will be powered via the USB cable that is already connected to your computer.

Remark: in case the USB port of your computer doesn't deliver enough power to assure a stable use, you can switch the button on the rear of the unit to [DC 5V] and use an external power adapter (DC 5V~1A) to power the unit.

- Connect the [MASTER] cinch outputs or XLR outputs to your audio amplifier or powered speakers.
- Connect your stage monitors (if any) to the [BOOTH] output connectors.
- Connect your microphone (if any) to the mic input on the front panel of the controller.
- Connect your headphones to the headphones output on the front panel on the controller.
- You can connect up to 2 external sound sources to the unit via the [LINE INPUT] cinch connectors and use the [INPUT LEVEL] rotary knob next to these connectors to adjust the level of the incoming signal.

See the chapter **AUDIO CONFIGURATION** to learn how to setup the audio routing in the software.

INSTALLING VIRTUALDJ

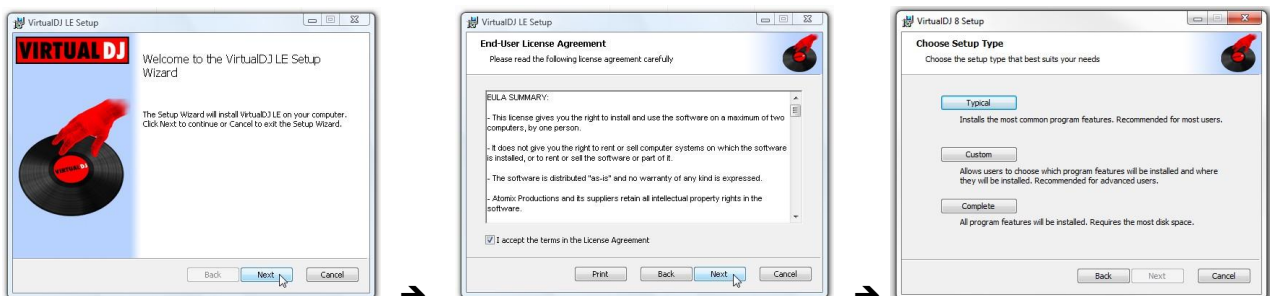
Installation on your computer:

Remark: The installation procedure below is explained for Windows. However, apart from some small differences, the procedure under MAC OS is very similar.

Insert the CD-ROM in your computer: normally the installation should start automatically. If the installation does not start automatically, browse the CD-ROM and double click the “install_virtualdj_le.exe” file (install_virtualdj_le.pkg for MAC users). File name can be slightly different)

If you don't have a dvd reader in your computer, register you license code and download the software on the Virtual DJ website

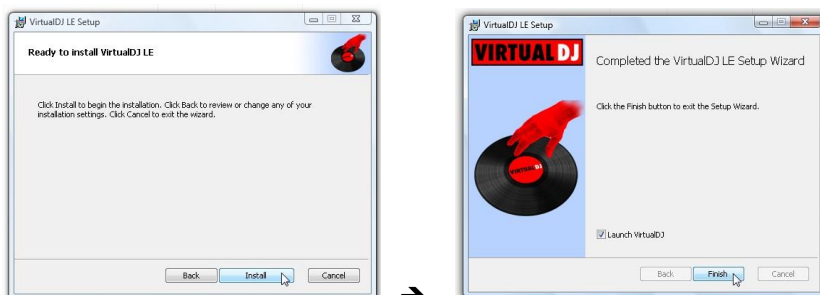
Follow the instructions on the screen:



Click the “NEXT” button

Read and accept the agreement

Choose “Typical” installation.



Press the “INSTALL” button

Press the “FINISH” button.

Activating the software:

→ !!! IMPORTANT !!! ←

We recommend you to visit the Virtual DJ website (www.virtualdj.com) to register your software. Sign in into your personal Virtual DJ account or create a new user account if you don't have one yet. Once this is done, register your software (with the “license code” used to unlock the software).

Now you are safe if ever you lose your license code or CD ☺. You can now also consult the tutorials, participate to the user forums and download the latest versions of the Virtual DJ Software to stay up to date!

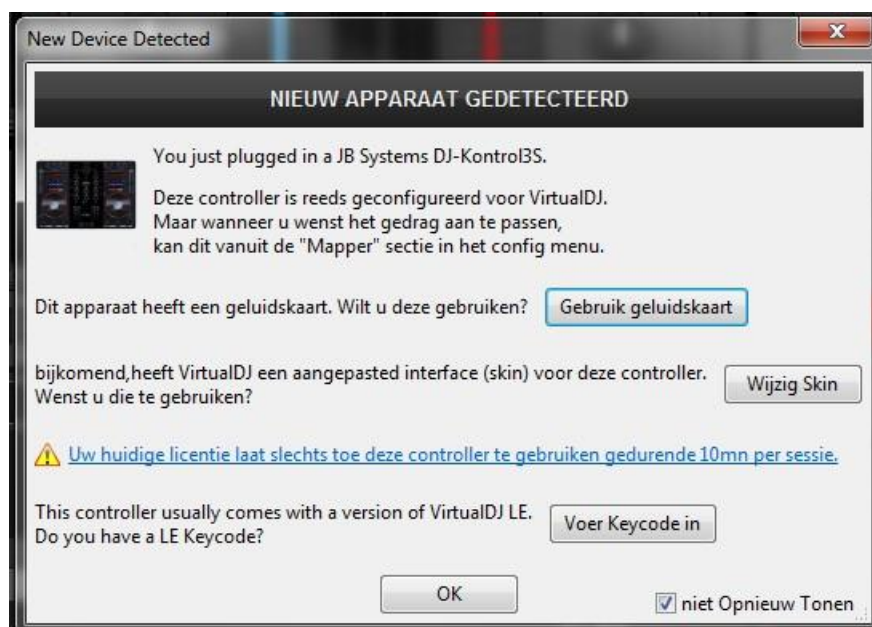
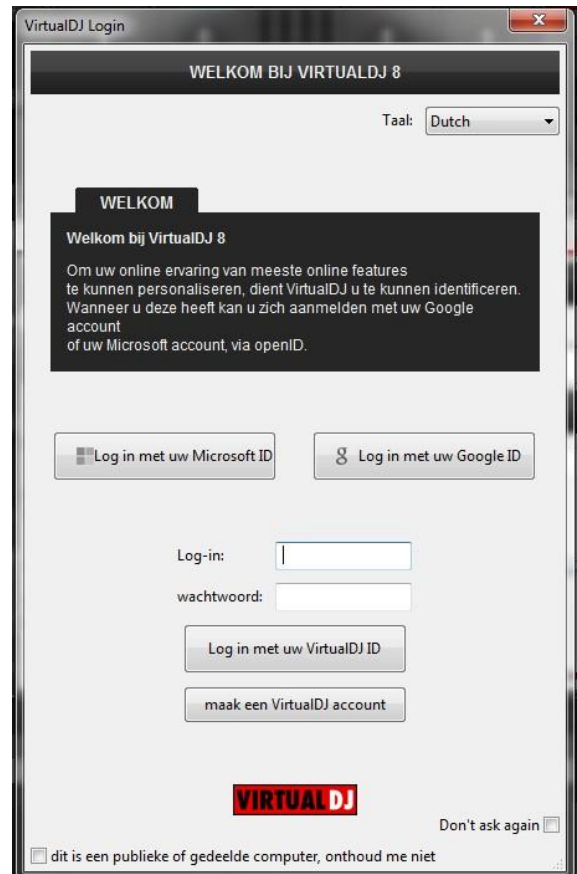
**Please note that JB Systems only covers the support for the hardware (the controller).
The support of VirtualDJ is exclusively covered by the developers at : www.virtualdj.com!**

When you have created your Virtual DJ account:

- Connect the DJ-KONTROL4 controller with the supplied USB-cable to your computer
- Wait till your computer has finished installing the DJ-KONTROL4. A window "device installed and ready for use" will appear when ready
- Open your Virtual DJ software
- At the same time, a big "Welcome" window will open that asks you to login
- We advise you to LOGIN with your Virtual DJ ID
- Once this is done, your Virtual DJ software will be unlocked.

Window NEW DEVICE DETECTED

- When your controller is recognized, the window NEW DEVICE DETECTED will open.
- You will see the text: "you just plugged in a JB Systems DJ-Kontrol4"
- Select: "Use the soundcard" so the audio settings will be automatically set for your controller
- Select "Enter Keycode" and fill in the license code.
- If you are logged in via Log-in and password of Virtual DJ and you have registered your license, the software will be unlocked automatically.
- Use the skin with 4 players.

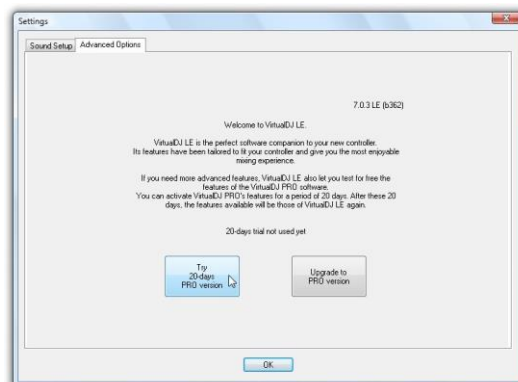


Upgrading to the PRO-version

After a while using VirtualDJ you will learn about the various interesting features inside the PRO-version of the program. As a user of the LE-version you can try the PRO-version for free during 20days, if you like it (we are sure you will 😊) you can buy the upgrade at a discount price (if you have registered your LE version !). Check the config menu for more information.

IMPORTANT: after the 20 days testing of the PRO version, you can still use your LE version if you don't want to pay to upgrade to the PRO version !

Just select [use Virtual DJ in Limited Edition mode]

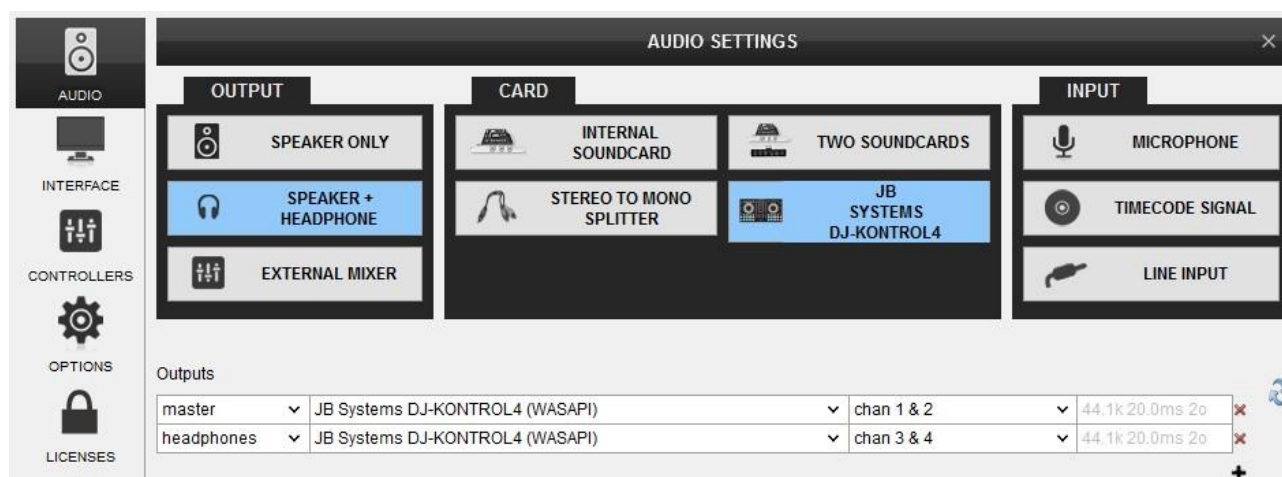


AUDIO CONFIGURATION

There are 2 options:

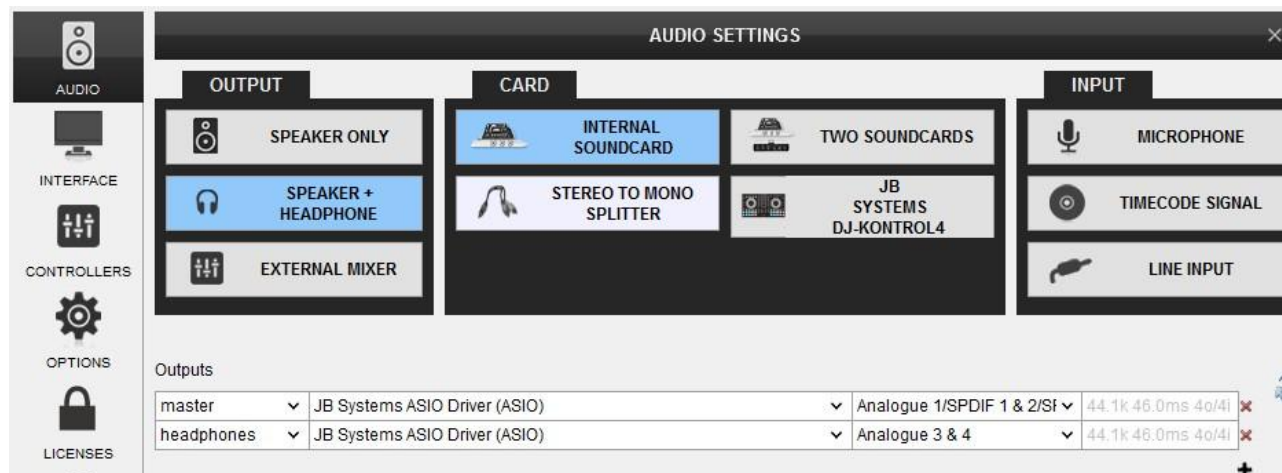
Standard setting (WASAPI)

- Select SPEAKER + HEADPHONE for the [OUTPUT]
- Select the JB SYSTEMS DJ KONTROL 4 soundcard in the section [CARD]
- For the outputs: select
 - Master > JB Systems DJ-KONTROL4(WASAPI) > chan 1 & 2
 - Headphones > JB Systems DJ-KONTROL4(WASAPI) > chan 3 & 4



Setting using the ASIO drivers

- Select [SPEAKER + HEADPHONE] for the [OUTPUT]
- Select [INTERNAL SOUND CARD] in the section [CARD]
- For the outputs: select
 - Master > JB Systems ASIO Driver (ASIO) > Analogue 1/SPDIF & 2/SPDIF
 - Headphones > JB Systems ASIO Driver (ASIO) > Analogue 3 & 4



USING OTHER DJ-SOFTWARE

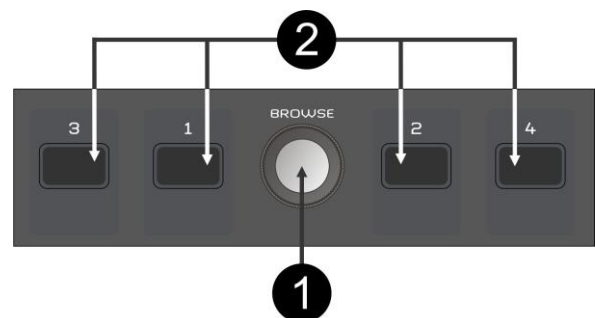
Since this controller is designed as a MIDI-compatible device, you can use it to control any Midi DJ-software. Of course this means that you will need special MIDI-mapping files to combine software and controller. Some Software developers offer this to their customers, sometimes they don't, meaning you will have to make them by yourself... so better check first if the mappings for your controller are available before to buy another brand of DJ software.

VIRTUALDJ TUTORIALS

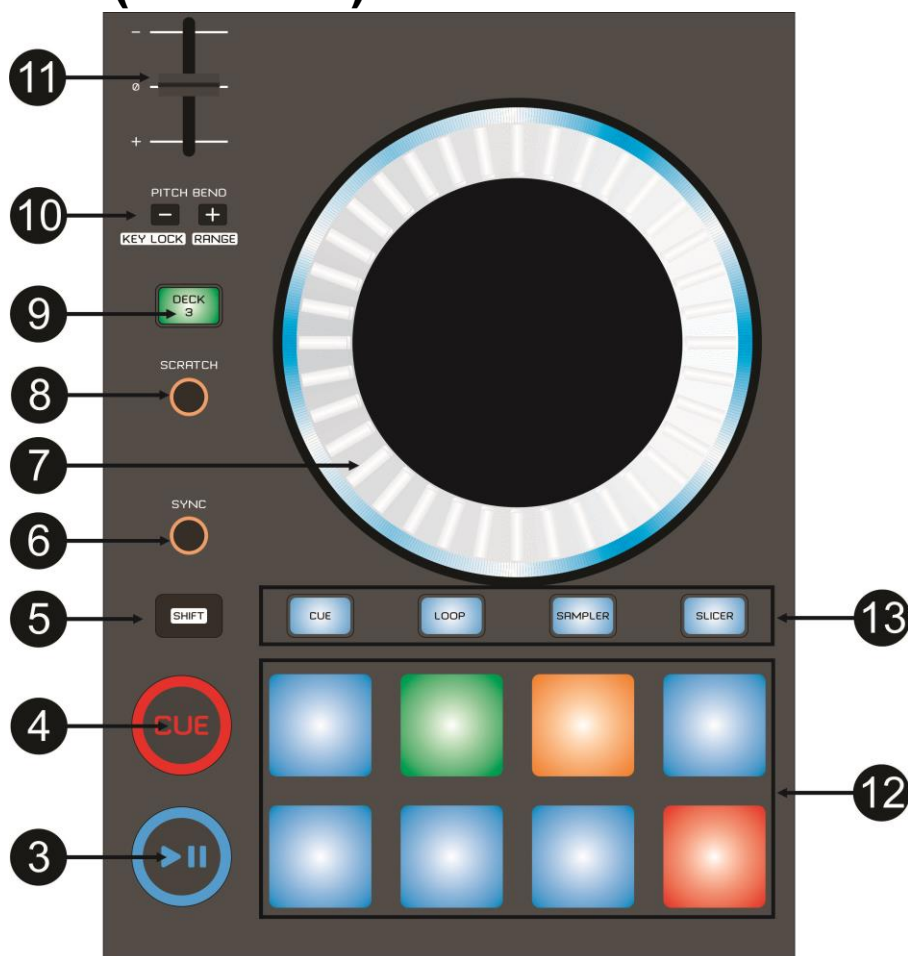
In the next chapter we give you a brief overview of the functions in VirtualDJ LE that comes with your controller. VirtualDJ is a very intuitive program so you will easily learn it while trying all possibilities. If you want to learn more, please check the VirtualDJ website for video tutorials and extra user guides: www.virtualdj.com/wiki/index.html.

FUNCTIONS (BROWSER)

1. **[BROWSE] knob:** turn this knob to scroll up or down in the folder navigation list or music library. Press this button to open a folder in the left navigation list and to toggle between the folder navigation and the music library.
2. **[1-2-3-4] buttons:** press one of these buttons to load the selected song in the desired player.



FUNCTIONS (PLAYERS)



3. **PLAY PAUSE button:** used to start/stop playback of the loaded track. When you use the play button while [SHIFT] is pressed, the song will be automatically synchronized with the other track that is playing.

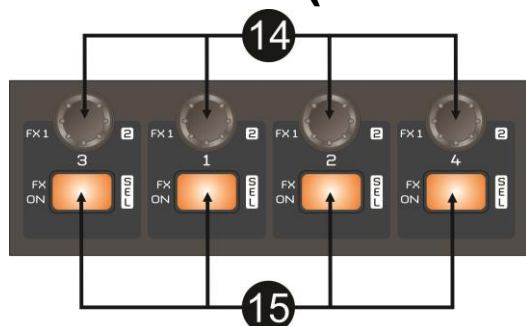
4. **[CUE] button:** when the player is in pause mode, you can use the [CUE] button to create a CUE starting point for your song. Keep the button pressed to preview the cue point until the button is released. When you press the [CUE] button during playback, the song will stop and return to its last CUE point
5. **[SHIFT] button:** used to activate “extra functions” on some buttons. The extra functions are usually written in the white zone of the buttons.
6. **[SYNC] button:** used to synchronize the tempo of the loaded track automatically to the track playing on the other deck.
7. **[SCRATCH] button:** this button will change the behavior of the big jog wheel when it is used while a song is playing:
 - **[SCRATCH] button is lit:** the jog wheel can be used for the [SCRATCH] effect
 - **[SCRATCH] button is off:** the jog wheel can be used to slow down or to accelerate temporary the speed of the song
8. **JOG WHEEL:** its function depends on the position of the [SCRATCH] button (7)
 - **[SCRATCH] button is lit:** the jog wheel can be used for the [SCRATCH] effect
 - **[SCRATCH] button is off:** the jog wheel can be used to slow down or to accelerate temporary the speed of the song
9. **[DECK] button 3&4:** This option is only used with the 4 player option in Virtual DJ. Press this button to select which player your controller should command. With this button of the left player you can toggle between player 1 or 3, with the button on the right player you can toggle between player 2 and 4. The color of the Jog Wheel LED will match the active deck in Virtual DJ.
10. **[PITCH BEND] buttons:** The speed rises while the “+ button” is pressed and returns to the original pitch when the button is released. The speed drops when the “– button” is pressed and returns to the original pitch when the button is released. These buttons can be used to manually synchronize the beats of 2 tracks.

When the SHIFT knob is pressed, these buttons have other functions:

 - **[SHIFT] & [-] button:** activate/deactivate the Key Lock. This function allows you to make adjustments to a tracks speed using the SPEED fader (11) without altering the tonal pitch
 - **[SHIFT] & [+] button:** the range of the SPEED Fader (11) will change, each time you press this button. You can select 6, 8, 10, 12, 20, 25, 33, 50 or 100%.
11. **SPEED fader:** used to change the playback speed of the playing track.
12. **Soft Touch Activation Pads:** the functionality of these 8 buttons is related to the type of effect you have selected with the function buttons (13):
13. **Function buttons:** are used to select the function for the soft touch activation pads (12)
 - **[CUE] ON:** you can use the activation pads to store 8 different CUE points. When a pad is lit, it means there is already a CUE point stored. To delete the stored CUE point: keep the [SHIFT] button pressed and press the activation pad with the CUE point you want to delete.
 - **[CUE] FLASHING:** the stored cue points can now be used as automatic CUE LOOPS. (loops that start on the cue points) The length of the automatic loop depends of the selected loop length (see computer screen). When there is no cue loop stored yet, you can press one of the activation pads (13) that is not lit yet to create an immediate CUE LOOP. To delete a CUE LOOP you need to go back first to normal CUE mode ([CUE] on, not flashing) and press the [SHIFT] button + the activation pad that you want to delete
 - **[LOOP] ON:** each of the pads will trigger an automatic loop of different lengths. On your computer screen you can see the length of the Loop for each activation pad.
 - **[LOOP] FLASHING:** you can now change the settings of the LOOP mode for the activation pads. With the activation pads on the left you can select one of the loop length pages (1 to 6). With the activation pads on the right you can change the LOOP mode: [ROLL], [ON/OFF] or [HOLD]. You can follow the setting changements on your computer screen.
 - **[SAMPLER] ON:** each of the pads will trigger one of the stored samples. Note that when you have a lot of elements like for the [INSTRUMENTS] samples, you can use the activation pads from the left player for the first 2 lines of 4 samples and use the activation pads from the right player for the next 2 lines of 4 samples. So you can play with all the available samples at once. You only have to set the function buttons (13) from the left and right player in [SAMPLER] mode.
 - **[SAMPLER] FLASHING:** With the activation pads on the left you can select one of the SAMPLER banks. With the activation pads on the right you can select the SAMPLER mode: [ON/OFF], [HOLD], [STUTTER] or [UNMUTE]
 - **[SLICER] ON:** each pad will activate an instant loop from a different starting point.

- **[SLICER] FLASHING:** With the activation pads on the left you can select the length of the slicer effect when it activated. With the activation pads on the right you can select speed (length) of each step.

FUNCTIONS (CHANNEL EFFECT 1)



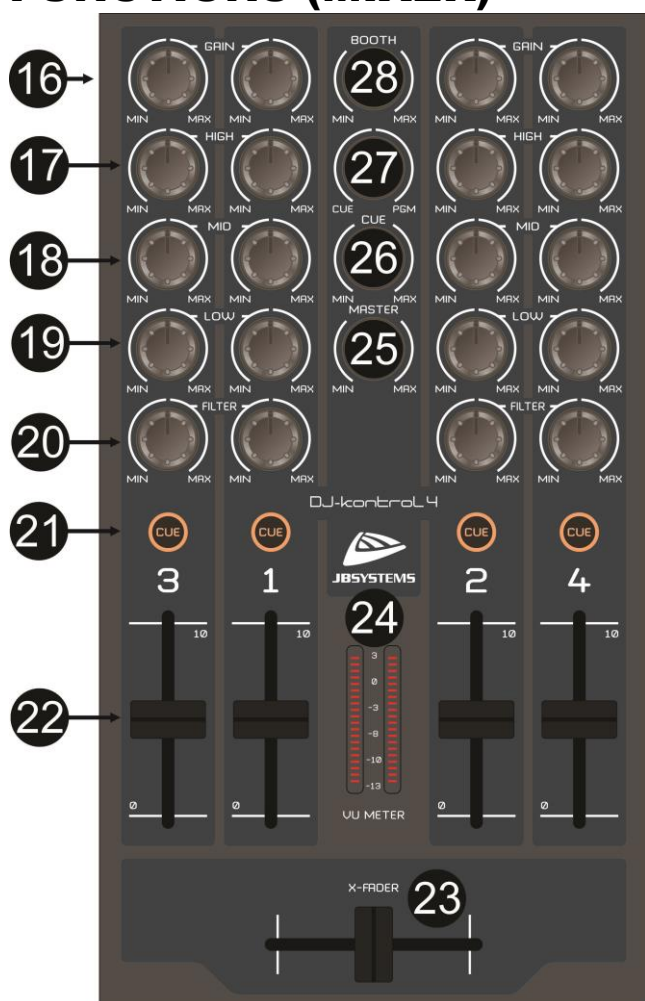
14. [FX1/2] knob::

- Turn the **PARAMETER** knob to adjust parameter 1 of the selected effect.
- Turn the **PARAMETER** knob while **[SHIFT]** is pressed to adjust parameter 2 of the selected effect.

15. [FX ON/SEL] button:

- Press the **[FX ON/SEL]** button to switch the selected effect on/off.
- Press the **[FX ON/SEL]** button while **[SHIFT]** is pressed to browse and select one of the available effects.

FUNCTIONS (MIXER)



16. **[GAIN] knob:** turn this knob to adjust manually the gain of the corresponding channel. (we suggest you to use the automatic gain function in Virtual DJ)
17. **[HIGH] knob:** used to adjust the high frequencies of the corresponding channel.
18. **[MID] knob:** used to adjust the middle frequencies of the corresponding channel.
19. **[LOW] knob:** used to adjust the low frequencies of the corresponding channel.
20. **[FILTER] knob:** used to filter the full tone spectrum with one single knob.
21. **[CUE] button:** use this button to select the source you want to hear in your headphones for pre-listening. Note that the [CUE / PGM] rotary button (27) must be set to the left
22. **CHANNEL FADER:** adjusts the output volume of the corresponding audio channel.
23. **CROSSFADER:** with this fader you can mix over between left and right channels. Of course, the faders of one of the left channels (1/3) and one of the right channels (2/4) needs to be open.
24. **[VU METER]:** here you can monitor the input level of the left players and the right players.
25. **[MASTER] volume knob:** used to set the volume of the master output.
26. **[CUE] volume knob:** used to control the output level of the headphone channel.
27. **[CUE/PGM] knob:** With this knob you can select / mix the source you want to hear in the headphones:
 - Put the knob in the extreme left position to hear the PFL signal of the player you have selected with one of the [CUE] buttons (21).
 - Put the knob in the extreme right position to hear the signal of the main output.
 - Put the knob in any other position to hear a mix of both signals.
 This option makes it possible to check your mix before you put it on the master output.
28. **[BOOTH] volume knob:** used to set the level of the [BOOTH] output. It is mainly used to control your stage monitors.



29. **MIC INPUT:** 6.3mm input jack to connect your DJ microphone.
30. **MIC VOLUME:** used to adjust the sensitivity of the DJ-microphone.
31. **PHONES OUTPUT:** connect your headphones to one of these connectors.

FUNCTIONS (REAR)



32. **Ground connector**
33. **[LINE 2] input:** can be used to connect an external sound source
34. **[LINE 1] input:** can be used to connect an external sound source
35. **[LEVEL] knob:** use this button to set the input level of the sound sources connected to the inputs [LINE 1] and [LINE 2] (33 & 34)
36. **[USB] connector:** B-type USB-connector. Please use the supplied USB cable to connect the controller to your computer.
Remark: if you are using a USB hub, make sure it is a powered hub. Otherwise you may experience unexpected problems.
37. **POWER SOURCE switch:** set this button to [USB 5V] to power your unit via the USB input (36) when the unit is linked to your computer.

If you use a computer that does not deliver enough power through its USB outputs to assure a stable working of your controller, you can connect an external power supply to the controller (38) . Put this switch to [DC 5V] when you use such an external power supply.

- 38. **[LINE 2] input:** can be used to connect an external sound source
- 39. **[RECORD] output:** can be used to record your performance to an external recorder. (example: JB Systems USB1.1 REC)
- 40. **[BOOTH] output:** mainly used to connect your stage monitors. The level of this output can be adjusted with the [BOOTH] knob (28) in the mixer section.
- 41. **UNBALANCED MASTER output:** unbalanced cinch/RCA stereo output, used to connect your audio amplifier. You can use this output if the signal cables to your amplifier are not longer than 2m or 3m.
- 42. **BALANCED MASTER output:** balanced XLR stereo output, used to connect your audio amplifier or amplified loudspeakers. A balanced signal connection is less sensitive to all kinds of interferences coming from all kinds of sources. Use this output if your amplifier or powered loudspeakers have balanced inputs (XLR) and the length of the signal cables exceeds 3m.

SPECIFICATIONS

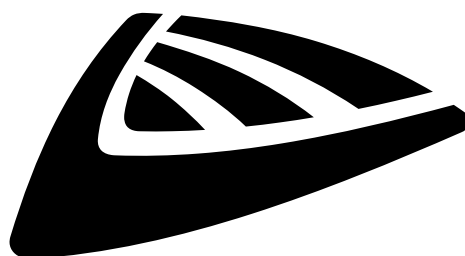
This unit is radio-interference suppressed. This appliance meets the requirements of the current European and national guidelines. Conformity has been established and the relevant statements and documents have been deposited by the manufacturer.

DJ-KONTROL 4

Power:	via USB or via an external power adapter (DC 5V~1A)
Audio interface:	24Bit
Dimensions:	533(W) x 280(D) x 70(H) mm
Weight:	4,02kg

The information is subject to change without prior notice

You can download the latest version of this user manual on our website: www.jb-systems.eu



JB SYSTEMS

MAILING LIST

EN: Subscribe today to our mailing list for the latest product news!

FR: Inscrivez-vous à notre liste de distribution si vous souhaitez suivre l'actualité de nos produits!

NL: Abonneer je vandaag nog op onze mailinglijst en ontvang ons laatste product nieuws!

DE: Abonnieren Sie unseren Newsletter und erhalten Sie aktuelle Produktinformationen!

ES: Suscríbete hoy a nuestra lista de correo para recibir las últimas noticias!

WWW.JB-SYSTEMS.EU

Copyright © 2017 by BEGLEC NV

't Hofveld 2C ~ B1702 Groot-Bijgaarden ~ Belgium

Reproduction or publication of the content in any manner, without express permission of the publisher, is prohibited.