



**NITECORE®**  
Brand Introduction  
**KEEP INNOVATING**

**NITECORE®**



# SUPERIOR PRIME

FULL FRAME CINEMA PRIME LENSES



**NITECORE®**

# **SUPERIOR PRIME**

**FULL FRAME CINEMA PRIME LENSES**



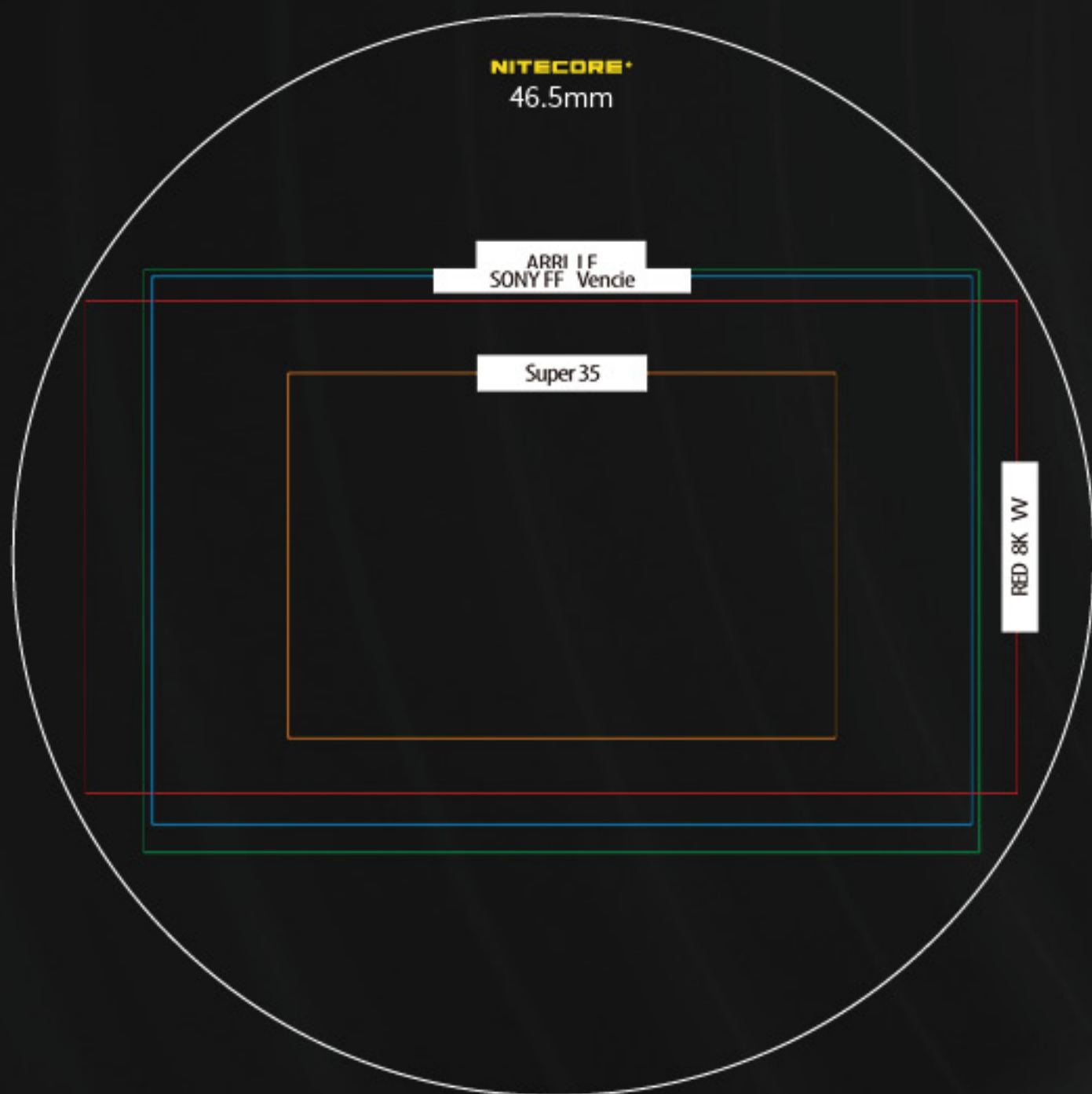
Superior Prime  
25mm / T2.1

Superior Prime  
35mm / T2.0

Superior Prime  
50mm / T2.0

Superior Prime  
75mm / T2.0

Superior Prime  
100mm / T2.0



## BIGGER FORMAT, WIDER VISION

The S46.5mm format sensors of the NITECORE SP Lenses create more possibilities for the filmmakers and cover the full frame format which is fully compatible with ARRI Alexa LF, Red Monstro VV, Panavision DXL2, SONY Venice, Canon C700 FF and other film cameras to be released in the future.



## PURER CINEMATIC PERFORMANCE

The apochromatic optical design provides outstanding performance in terms of ratio and axial dispersion. It achieves a natural and pure color rendering capability with the purple/green fringing hardly seen either within focus or in bokeh.





## RIGOR AND INDIVIDUALITY

The NITECORE SP Lenses are designed with a unique optical coating which ideally controls dispersion while retaining plentiful details to create low contrast and a stylized flare. The SP 75mm lens is specially optimized on the skin details in a portrait.



**NITECORE®**

**SUPERIOR PRIME**  
FULL FRAME CINEMA PRIME LENSES

## OPTIMUM OPTICAL QUALITY

A series of industrial grade cinema filters allows filmmakers to best attain their techniques of artistic expression.

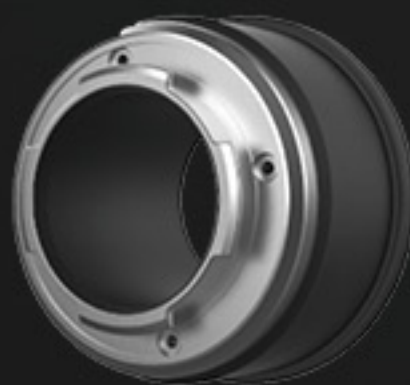




## INTERCHANGEABLE MOUNT

The NITECORE SP Lenses are designed with high flexibility to be equipped with interchangeable PL, Canon EF and Sony E mounts for the needs of different camera users.

\* The PL mount is included in the original package.



Sony E-mount



Canon EF-mount



PL -mount



## SPECIFICATIONS

	25mm/T2.1	35mm/T2.0	50mm/T2.0	75mm/T2.0	100mm/T2.0
T Stop Range	T2.1-22	T2.0-22	T2.0-22	T2.0-22	T2.0-22
Close Focus (minimum marked distance)	0.18m 7"	0.3m 1'	0.45m 1'6"	0.7m 2'3"	0.55m 1'11"
Front Diameter	95mm	95mm	95mm	95mm	95mm
Length (Front to PL mount flange)	117mm	117mm	117mm	117mm	117mm
Weight	1330g	1280g	1230g	1120g	1230g
Max. Diagonal Angle of View for 36 x 24mm Format	82°	63°	47°	32°	23.5°
Max. Diagonal Angle of View for s35 Format	52°	39°	28°	19°	14.5°
Max. Diagonal Angle of View for Vista Vision Format	86°	67°	50°	34°	25.5°
Number of Iris Blades	12	12	12	12	12
Focus Rotation	270°	270°	270°	270°	270°
Iris Rotation	~70	~70	~70	~70	~70

