



Made for ideas.

D2 USB 3.0 USER MANUAL



[CLICK HERE TO ACCESS UP-TO-DATE ONLINE VERSION](#)

of this document for the most recent content as well as for features such as expandable illustrations, easier navigation, and search capability.



INTRODUCTION

Welcome to the User Manual for the LaCie d2 USB 3.0. Your LaCie hard drive features SuperSpeed USB 3.0, giving you the potential to reach transfer rates up to 5Gb/s. In addition to fast data transfers with computers that support USB 3.0, the LaCie d2 is compatible with the widely available USB 2.0 for universal connectivity.



These pages will guide you through the process of connecting your LaCie product. If you have questions regarding the installation or, how to use your LaCie hard drive, consult the [Getting Help](#) page.

BOX CONTENT

- LaCie d2
- USB 3.0 cable (USB 2.0 compatible)
- Power supply
- Quick Install Guide

Important info: Save your packaging. In the event that the hard drive should need to be repaired or serviced, it must be returned in its original packaging.

Software suite

During installation, you have the option to install the following software utilities:

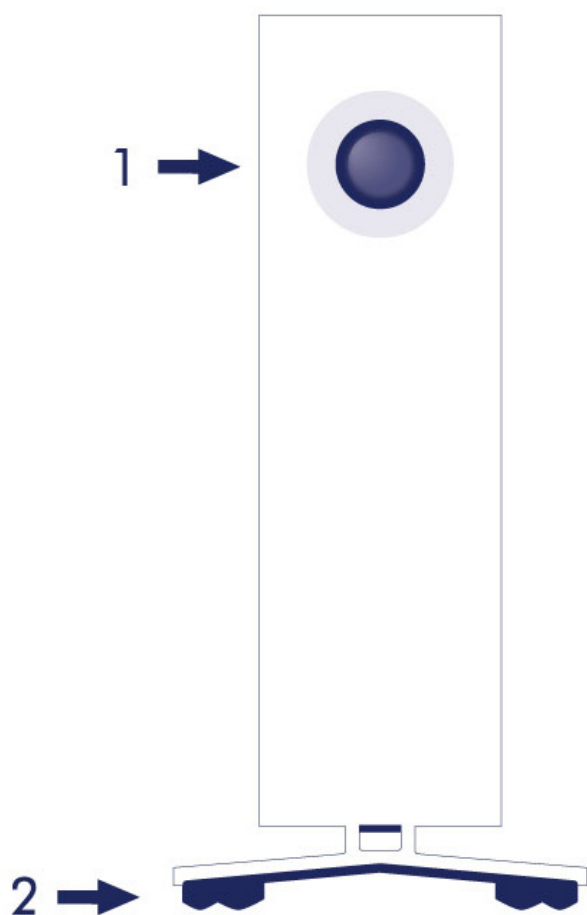
- Intego® Backup Assistant (Mac®)
- LaCie Genie® Timeline (Windows®)
- LaCie Desktop Manager (provides system information, one-touch shortcut, and power-saving management)
- LaCie Private-Public (protect data with AES 256-bit encryption)

MINIMUM SYSTEM REQUIREMENTS

Your system must meet certain requirements in order for your LaCie product to function properly. For a list of these requirements, please refer to the product packaging or consult the product support web page at www.lacie.com/support/.

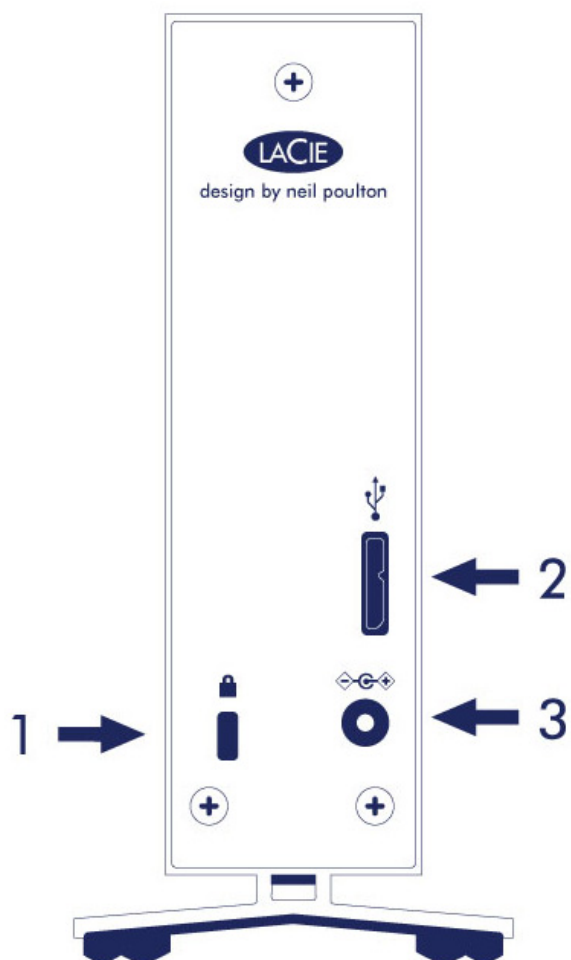
VIEWS OF THE HARD DRIVE ENCLOSURE

Front view



- 1. Hard drive status LED
- 2. Vibration-dampening rubber feet

Rear view



1. Kensington® lock slot
2. USB 3.0 port
3. Power supply connection

QUIET OPERATION AND HEAT MANAGEMENT

To reduce noise during operation, the LaCie d2's built-in stand features vibration-dampening rubber feet. Additionally, the LaCie d2's metal casing dissipates heat from the drive, allowing for noiseless, fan-free cooling. Since LaCie's unique design draws heat away from the internal hard drive, the external casing will be warm to the touch after extended use.

The LaCie d2's specially constructed exterior can prolong the life of its hard drive via the fan-free cooling system. To protect the hard drive from external forces, the LaCie d2 also includes rubber anti-shock disk mounts within the enclosure.

POSITION AND STACKING

Always make certain to place the LaCie d2 on a flat, even surface that can support the heat output and airflow of a professional hard drive enclosure. For proper heat dissipation, the LaCie d2 is designed to stand on its stand. DO NOT place the enclosure on its side when it is powered on.

The LaCie d2 does not support stacking. Doing so poses a severe risk that it will fall. DO NOT stack other drives, enclosures, or equipment on top of the LaCie d2.

The warranty for your LaCie d2 will be voided if you:

- Stack the LaCie d2 enclosure on another device.
- Stack other drives, enclosures, or equipment on top of the LaCie d2.

TECHNICAL SPECIFICATIONS

Power supply

100-240V; 50/60Hz; 18W

Dimensions

| Width | Depth | Height |
|----------------|-----------------|-----------------|
| 60 mm / 2.4 in | 190 mm / 7.5 in | 130 mm / 5.1 in |

Weight

| Capacity | Weight |
|----------|------------------|
| 3TB | 1.2 Kg / 2.6 lbs |
| 4TB | 1.3 Kg / 2.8 lbs |
| 6TB | 1.4 Kg / 3.0 lbs |

LED POWER BUTTON

Your LaCie hard drive features a multi-functional LED on the front of the drive.

LED STATES

| LED Behavior | State |
|------------------------------------|---|
| Off | The product is turned off; the USB cable is not connected to a computer that is turned on and/or the power cable is not connected to a live power outlet. |
| 30s off, flash blue, 30s off, etc. | The product is in power-saving mode due to one of the following: its volumes have been unmounted on the host computer; the host computer placed it into sleep mode; or, the host computer is in sleep mode. |
| Solid blue | The product is turned on and the hard drive is ready for access. |
| Flickering | During normal operation, the LED flickers to indicate access to the hard drive. |

Receiving power

The LaCie d2 powers on automatically when it is:

- Connected directly to a computer via the USB port. The computer must be powered on.
- Connected to a live power source via the included power supply.

Note on the USB 3.0 connection: The LaCie d2 can be connected to a USB 2.0 port on your computer. To take advantage of SuperSpeed USB 3.0 transfer rates, you must connect the enclosure to a computer with a USB 3.0 port.

LED BUTTON

The LED is a button that can be used to power off/on the LaCie d2.

Power off

Follow the steps below to turn the device off:

1. Make certain that the LaCie d2's volumes are not being accessed.
2. Eject the LaCie d2's volumes. See [Unmounting Your Hard Drive](#) for instructions. Once the volumes have been properly ejected, the LaCie d2 enters power-saving mode.
3. Apply a long press, a minimum of four seconds, to the LED button. The LED turns solid blue before turning off.

Power on

In most instances, the LaCie d2 powers on automatically when connected to a computer and an active power source. However, the LED button can be used to power on the device if the following two conditions are met:

- The LaCie d2 was powered off using a long press
- The LaCie d2 remains connected to the computer's USB port and an active power source

To power on the LaCie d2, push the LED button for one second.

Power-saving mode

Your LaCie d2 can conserve energy by entering power-saving mode. When the LaCie d2 is in power-saving mode or, eco mode, the hard drive within the enclosure spins down to reduce power consumption. Power-saving mode can extend the life of the hard drive by sparing it from working during extended periods of inactivity.

You can initiate power-saving mode by performing one of the following:

- Place the host computer into sleep mode.
- **Mac:** Go to **System Preferences > Energy Saver** to enable sleep mode for hard drives.
- **Windows:** Run LaCie Desktop Manager (see [LaCie Desktop Manager](#)) to configure power-saving/eco mode.

To exit power-saving mode, review the table below:

| Entering power-saving mode | Exiting power-saving mode |
|--|---|
| The host computer placed the product into power-saving mode due to inactivity. | Access the LaCie d2's volume on the host computer. For example, copy files to its volume. |
| The computer is in sleep mode. | Wake up the computer. |
| Windows only: LaCie Desktop Manager put the product to sleep due to inactivity. | Access the LaCie d2's volume on the host computer. For example, copy files to its volume. |

Note on ejecting the volume and power-saving mode: The LaCie d2 enters power-saving mode when its volumes are ejected. To access the LaCie d2's volumes, unplug the USB cable from the back of the device and reconnect it.





CABLES AND CONNECTORS

USB 3.0

USB is a serial input/output technology for connecting peripheral devices to a computer. SuperSpeed USB 3.0 is the latest implementation of this standard, and it provides higher bandwidth and new power management features.

Transfer rates can attain up to 5 Gbits/s as opposed to USB 2.0's 480 Mbits/s. This means USB 3.0 is theoretically up to ten times faster than its predecessor.

Your LaCie drive is shipped with a SuperSpeed USB 3.0 cable to ensure maximum data transfer performance when connected to a compatible USB 3.0 port. The cable will also work when connected to a USB 2.0 or 1.1 port, but drive performance will be limited to their respective transfer rates.

| Connector Face (to Computer) | Cable End (to Computer) | Cable End (to Hard Drive) | Connector Face (to Hard Drive) |
|--|---|---|--|
|  |  |  |  |

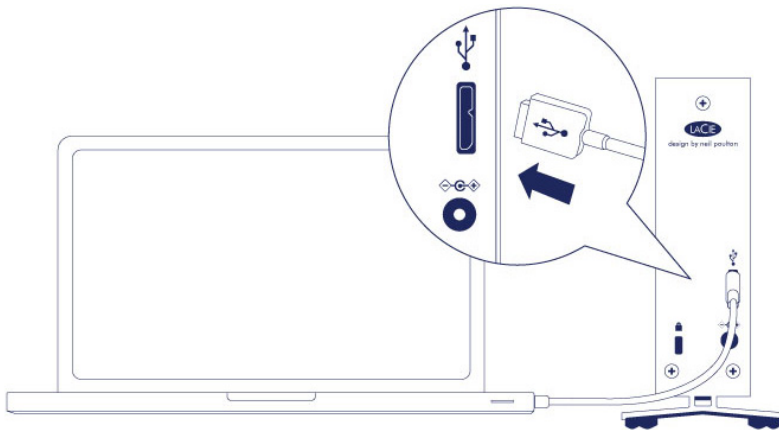
Note on USB 3.0: Your PC or Mac must have a USB 3.0 port to take advantage of USB 3.0 transfer rates.

GETTING CONNECTED

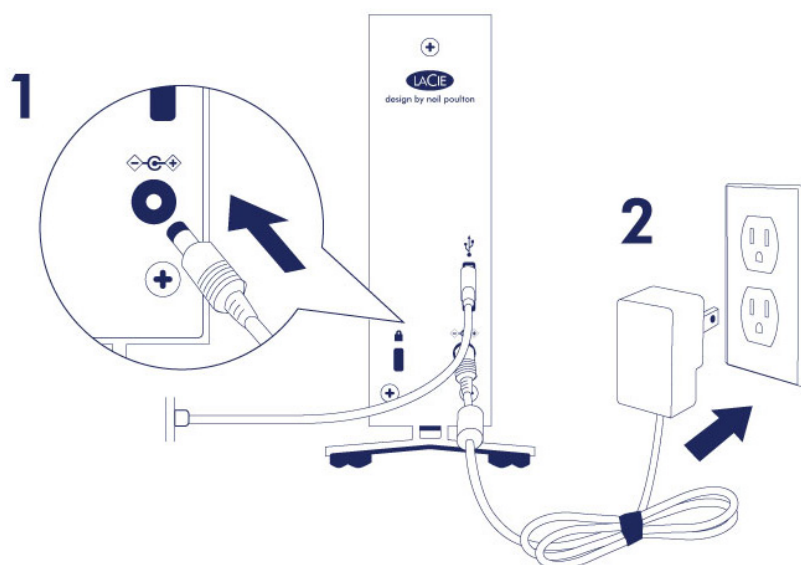
Follow the setup steps in the order they are given to ensure that your LaCie hard drive's volume mounts correctly on your computer.

STEP 1 - CONNECT THE INTERFACE CABLE

Connect the interface cable from the LaCie d2 to the computer.



STEP 2 - CONNECT THE POWER SUPPLY



Connect the power supply in the following order:

1. The power input port on the back of the LaCie d2.
2. A live power outlet.

The LaCie d2 will power on automatically when it is connected to a computer that is turned on and a live power outlet.

Note: If the hard drive's volume does not mount on your computer, see troubleshooting topics at [Getting Help](#).

STEP 3 - LAUNCH LACIE SETUP ASSISTANT

LaCie Setup Assistant (LSA) must be launched before using your drive. It will allow you to:

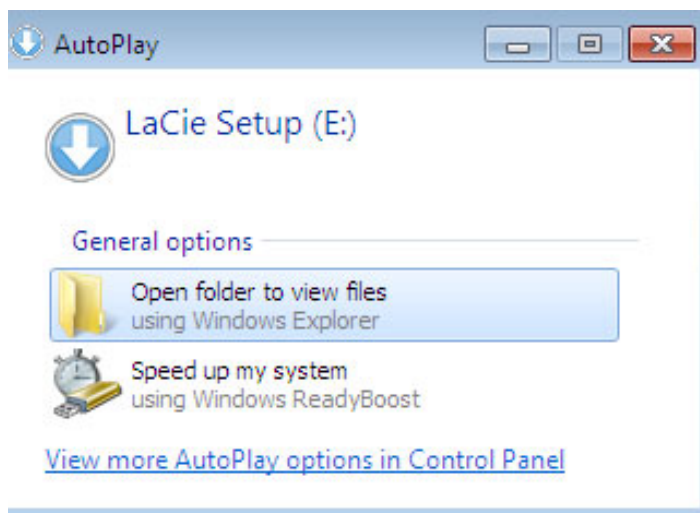
- Easily format the hard drive according to your needs
- Copy the User Manual to your computer
- Install software for added features
- Register your LaCie device

Important info: If you do not launch LSA or if you quit it after the formatting has begun, your drive will not be ready to use and will require manual formatting. The User Manual and utilities will not be available and will have to be downloaded from the LaCie website: www.lacie.com/support/.

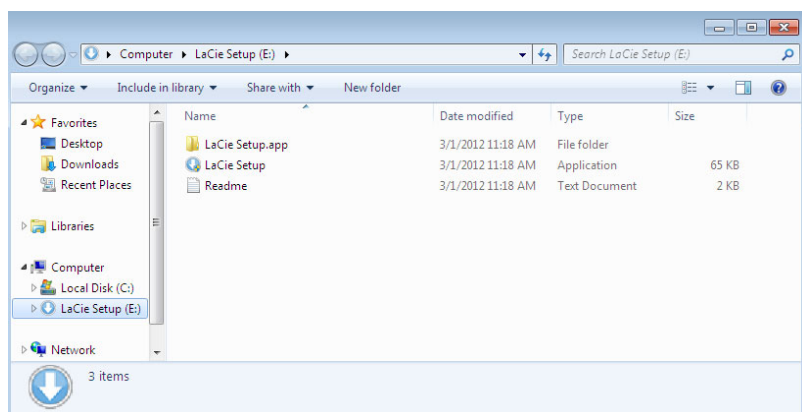
Launch LaCie Setup Assistant

Windows users

AutoPlay: Windows AutoPlay may detect your LaCie hard drive as soon as it is connected to your computer. If the AutoPlay window appears, choose **Open folder to view files using Windows Explorer** and double-click **LaCie Setup**.

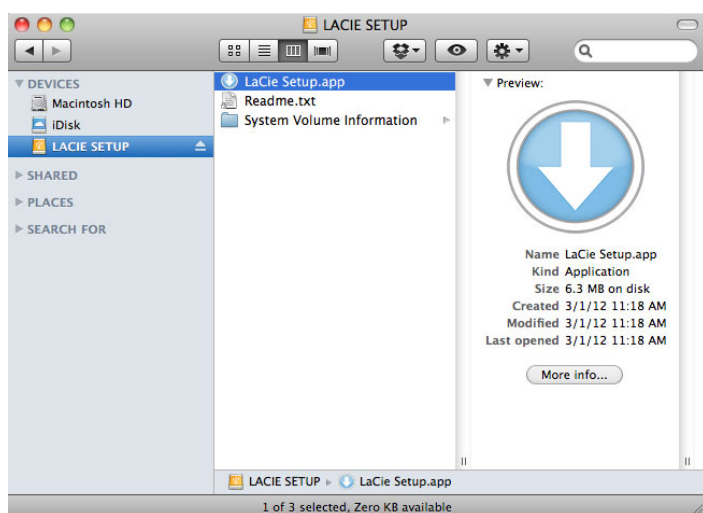


Manual access: Open the **LACIE SETUP** volume in **Computer** (**My Computer** for Windows XP) and double-click **LaCie Setup**.



Mac users

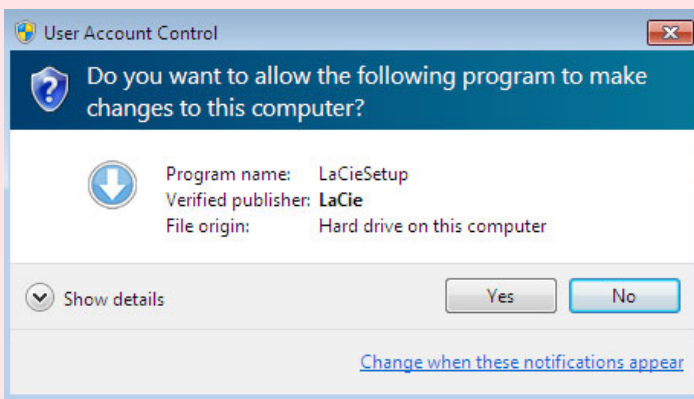
Open the **LACIE SETUP** volume on your desktop and then double-click **LaCie Setup**



Setup

LaCie Setup Assistant does not prevent you from using your computer's native disk utility program to format or partition your LaCie drive. Simply follow the Setup Assistant through completion, then use Disk Management for Windows or Disk Utility for Mac to reformat your drive.

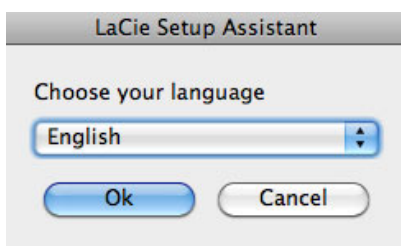
Important info for Windows users: While running LaCie Setup Assistant, generic pop-up windows may ask if you wish to change your computer's settings. This is a normal request when formatting a disk or installing certain software, such as Genie Timeline. To successfully complete LaCie Setup Assistant, LaCie recommends that you agree to change the settings.



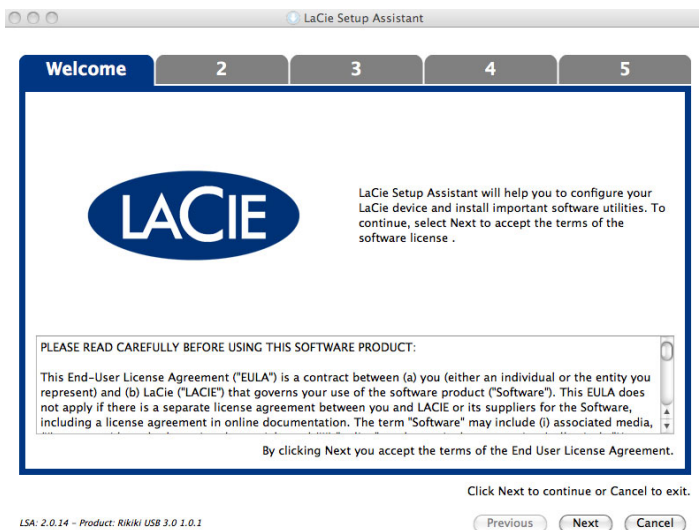
Important info for Mac users: You may be prompted to enter your computer password to continue with LaCie Setup Assistant.

Follow the on-screen instructions as listed below to format your drive and install software utilities:

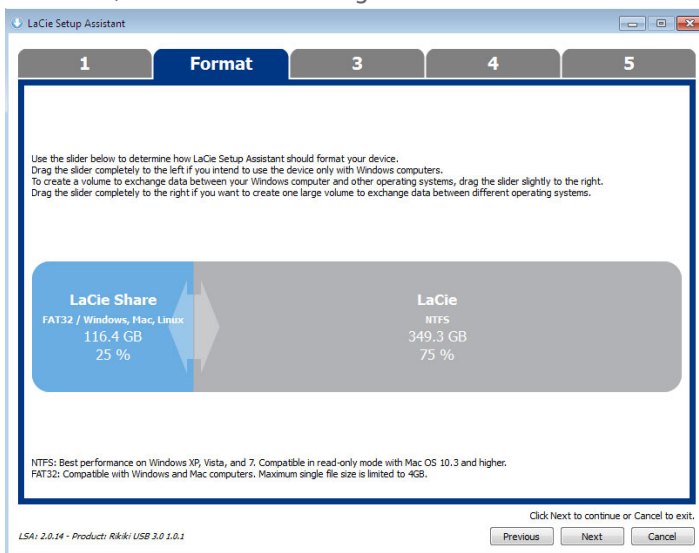
1. Select your language.



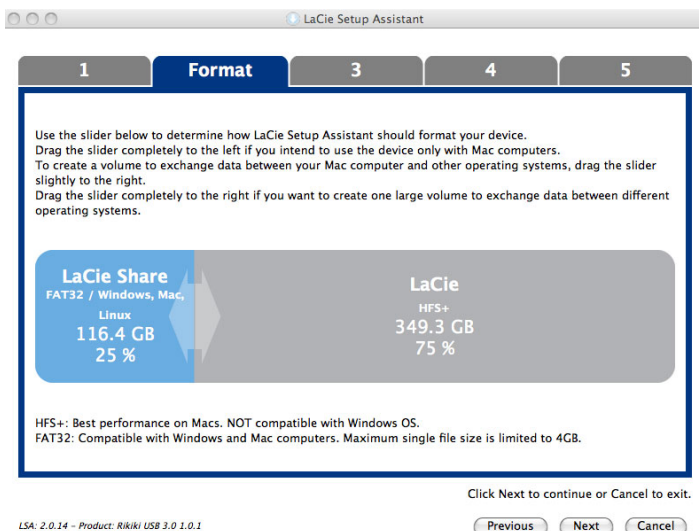
2. Read the license agreement before choosing **Next**. Selecting **Next** confirms that you accept the license agreement.



- Use the slider to partition your LaCie hard drive. Moving the slider to the left will reduce the size of the **Compatible** volume (called **LaCie Share** on some products) (for Windows and Mac). If you do not want the **Compatible** / **LaCie Share** volume, move the slider all the way to the left. The LaCie volume will be formatted for your operating system, NTFS for Windows and HFS+ for Mac. Once you have made your selection, choose **Next** to begin the format.

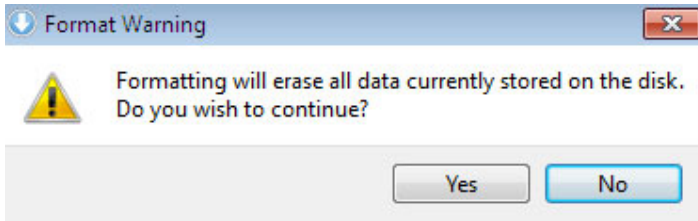


Windows

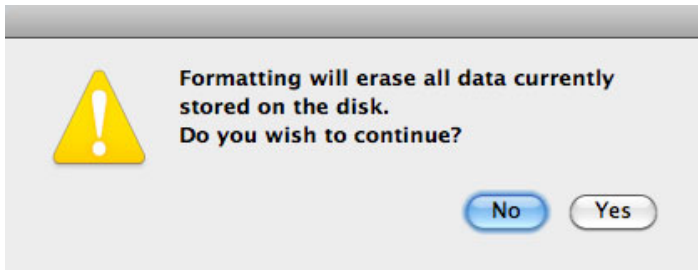


Mac

4. A window prompt alerts you that the disk will be formatted. Select **Yes** to continue.

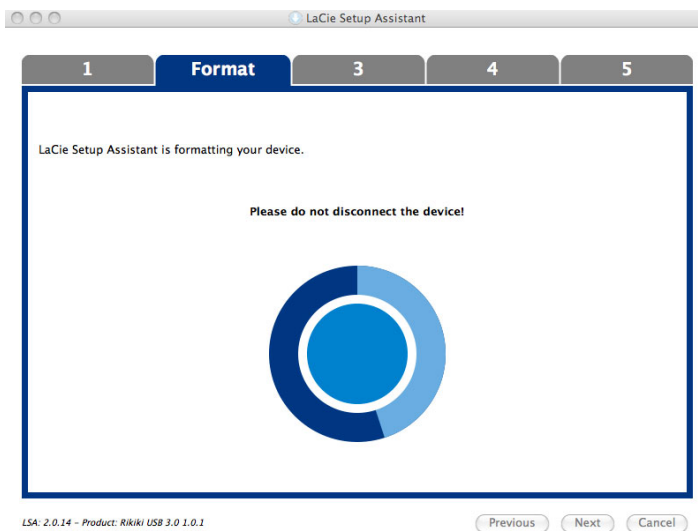


Windows

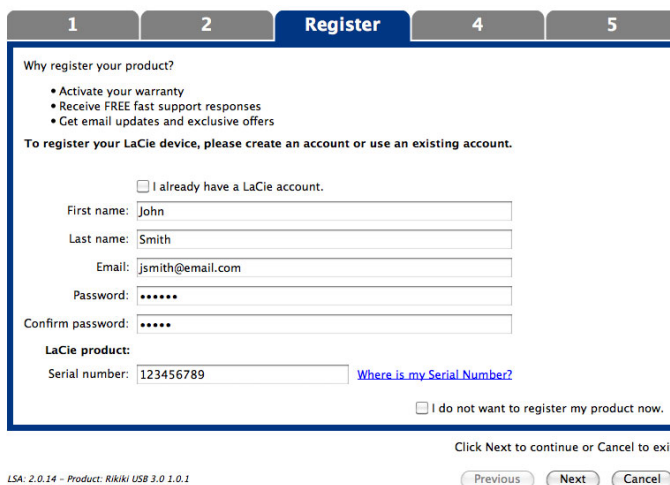


Mac

5. LaCie Setup Assistant will format the hard drive.



6. Register your LaCie device. Choose **Next** to continue.

A screenshot of the LaCie Setup Assistant window on a Mac, showing the "Register" step. The window has a title bar that says "LaCie Setup Assistant". Below the title bar is a progress bar with five steps: 1, 2, Register (selected), 4, and 5. The main content area is titled "Why register your product?" and lists three benefits: "Activate your warranty", "Receive FREE fast support responses", and "Get email updates and exclusive offers". Below this, it says "To register your LaCie device, please create an account or use an existing account." and provides a checkbox for "I already have a LaCie account." If not checked, there are input fields for "First name", "Last name", "Email", "Password", and "Confirm password". Below these is a "LaCie product:" section with a "Serial number" field and a link "Where is my Serial Number?". At the bottom, there is a checkbox for "I do not want to register my product now." and a status bar that says "LSA: 2.0.14 - Product: Rikiki USB 3.0 1.0.1" and three buttons: "Previous", "Next", and "Cancel".

New Account

Existing Account

7. Choose the software utilities that you want to install. Certain software utilities may begin to install before LaCie Setup Assistant has finished. Follow the software utility installer before completing LaCie Setup Assistant.
8. Choose **Next** to continue.
9. LaCie Setup Assistant provides a summary of the installation. Choose **Finish** to close the program. Your LaCie hard drive is now ready for use.

Software will be installed on the product's storage, not on your computer. It will be located on the volume entitled "Compatible" or "LaCie Share" if it exists, otherwise on "LaCie".

LaCie software utilities may be installed at any time. Once the format is complete, the LaCie Setup Assistant application will be available on:

- LaCie: if you created one partition
- Compatible/LaCie Share: if you created two partitions

To install the software utilities, simply launch LaCie Setup Assistant and follow the steps listed above.

DISCONNECTING THE HARD DRIVE

In order to avoid file system corruption, it is important to unmount your hard drive's volumes before disconnecting the interface cable. See [Unmounting Your Hard Drive](#) for details.

LACIE DESKTOP MANAGER

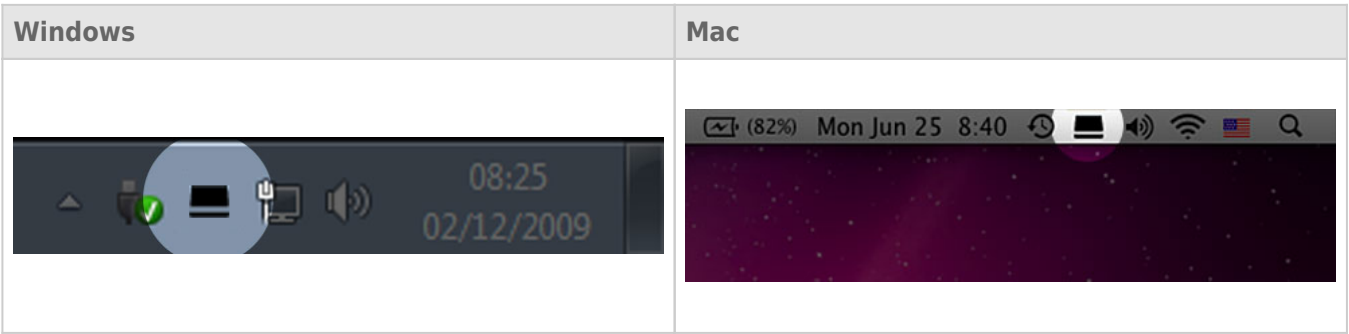
LaCie Desktop Manager is a software utility that provides important information regarding the status and health of your device.

INSTALLING LACIE DESKTOP MANAGER

LaCie Setup Assistant includes the option to install LaCie Desktop Manager during the initial setup. If LaCie Desktop Manager is not installed on your computer, follow the directions below:

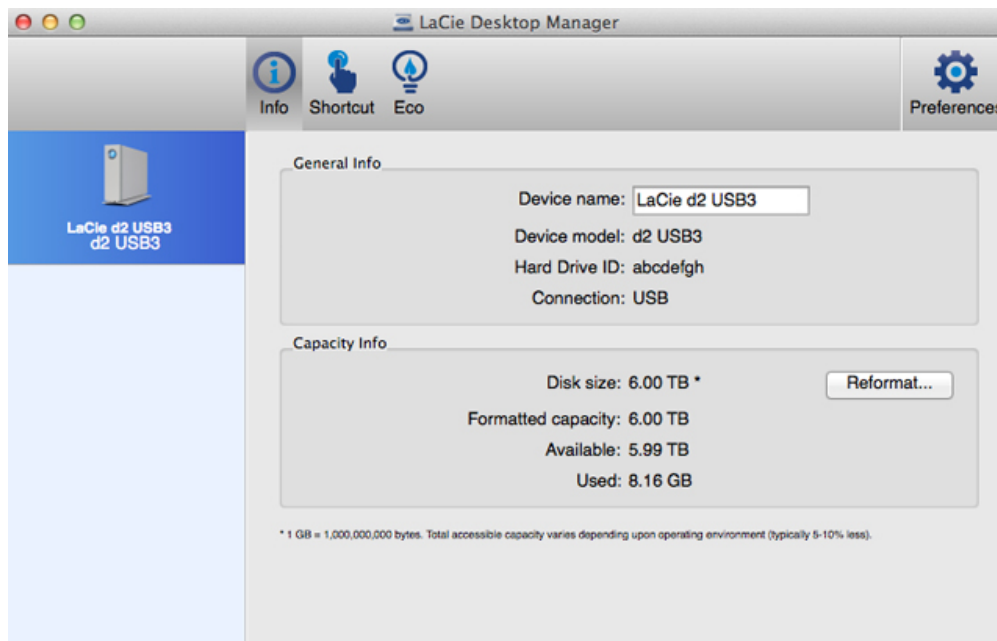
- 1. Go to the [LaCie d2 product page](#)
- 2. Choose the Support tab and download the installer for LaCie Desktop Manager
- 3. Once the download is complete, locate the installer on your computer. Generally, downloads can be found in the Downloads folder.
- 4. Launch the installer for your operating system and follow the setup wizard to completion.

When setup is complete, launch LaCie Desktop Manager from the System tray (Windows) or the Menu bar (Mac).



LaCie Desktop Manager provides a list of all compatible LaCie devices in the left-hand column. If you have more than one compatible LaCie device, choose a product and use the tabs to navigate to the page you want.

INFO TAB



Review the details of your device:

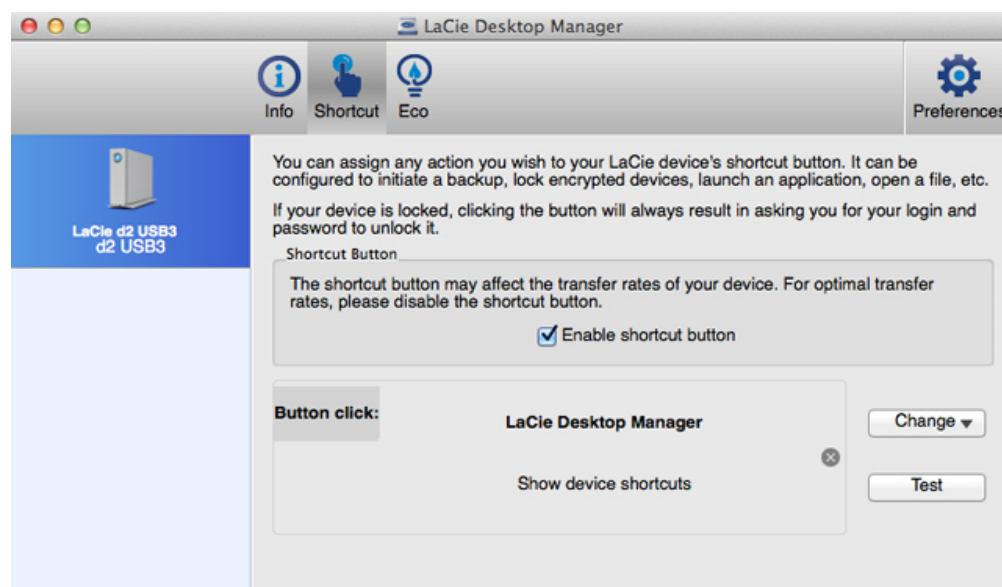
- Name
- Model
- Hard drive ID
- Connection type
- Total capacity
- Available capacity

Reformat

From the **Info** tab, you can reformat the hard drives.

Caution: Choosing **Reformat** launches your operating system's disk utility (see [Optional Formatting and Partitioning](#) for details). Formatting erases all data stored on your hard drives. To protect files, back up your hard drives before selecting **Reformat**.

SHORTCUT TAB

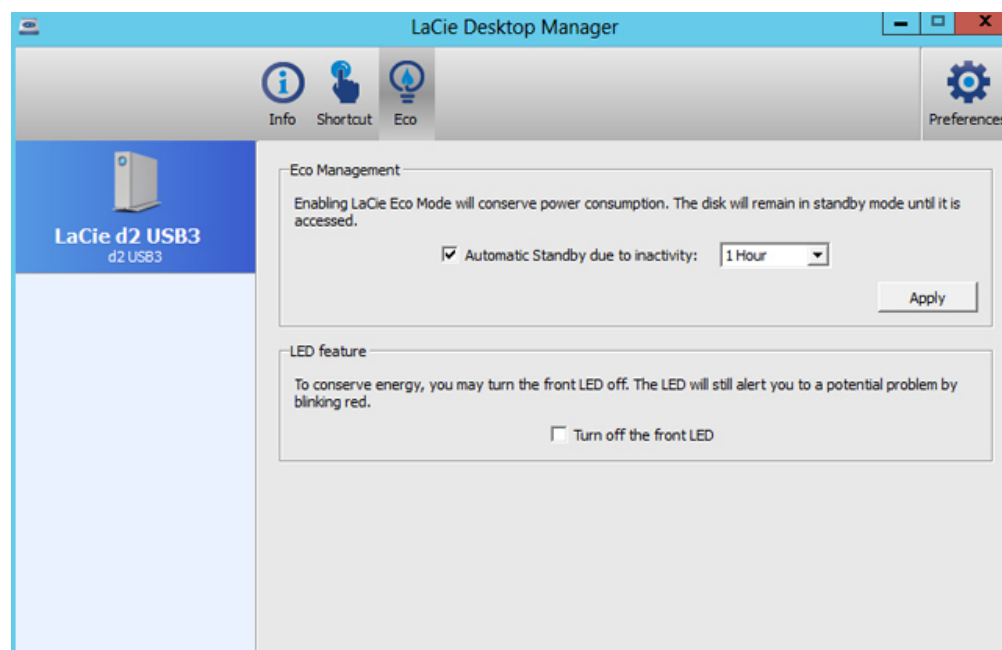


Configure a short press of the LED button to launch an application. A short press is one second.

The default setting for the Shortcut is LaCie Desktop Manager but you can browse for your preferred application. For example, set the LED button Shortcut to launch your operating system's photo application.

ECO TAB

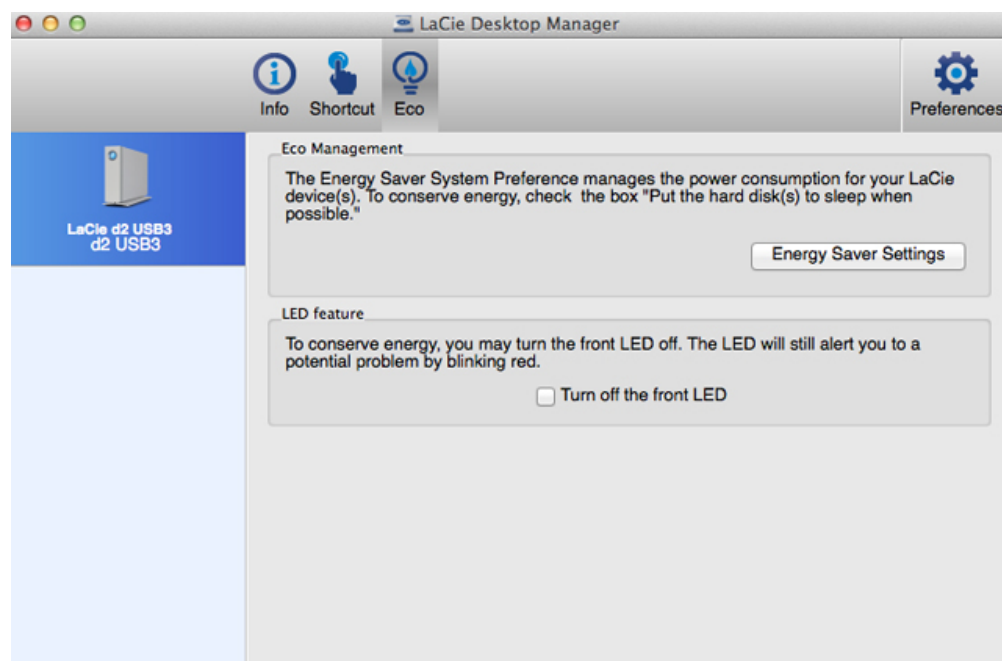
Windows



Set the time that the LaCie d2 is inactive before entering Eco mode. Eco mode is also known as power-saving mode.

See [LED Power Button](#) for further details on power-saving mode.

Mac



The Mac OS manages the power-saving mode for external devices. Choose **Energy Saver Settings** in LaCie Desktop Manager to launch the System Preferences. Within the Energy Saver preference, select the option to put external hard drives to sleep when possible.

UNMOUNTING YOUR HARD DRIVE

USB, FireWire, Thunderbolt, and eSATA external devices feature “plug & play” connectivity, which means that your LaCie storage can be connected and disconnected while the computer is running. To prevent failures, however, it is important to follow these steps when disconnecting your device.

WINDOWS XP USERS

From the System Tray (located in the lower right-hand side of your screen), click the Eject icon (a small green arrow over a hardware image). A message will appear, listing the devices the Eject icon controls (it should say, “Safely remove...”). Click on the LaCie storage device in this prompt.



This message will appear: “Safe to Remove Hardware” (or similar). It is now safe to disconnect the device.

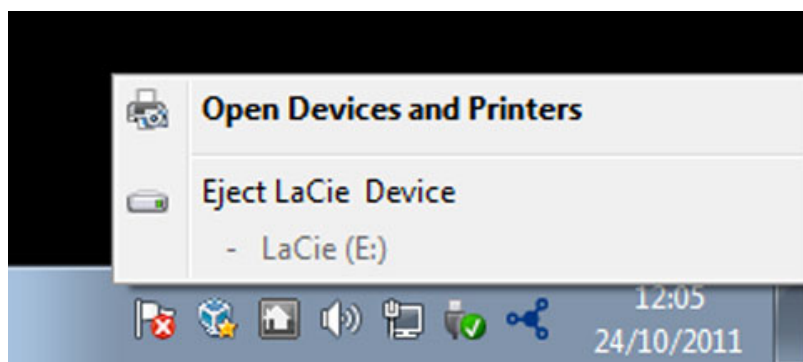
WINDOWS VISTA & WINDOWS 7 USERS

From the System Tray (located in the lower right-hand side of your screen) click on the plug icon (note the white check mark inside a green circle).



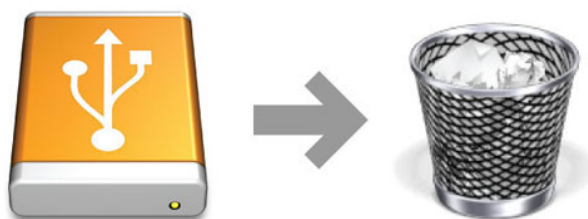
A message will appear, detailing the devices that may be safely unmounted.

Select **Eject** for the device you wish to unmount. A message will appear notifying you that it is safe to remove it.



MAC USERS

Drag the storage device icon to the Trash. (The icon pictured below is a generic USB device icon. Your LaCie storage may be represented by an icon that looks like the device itself.)



When the icon disappears from the desktop, the storage device can be disconnected.

OPTIONAL FORMATTING AND PARTITIONING

Standard LaCie storage devices will prompt you to run LaCie Setup Assistant when they are first connected to a computer (Windows or Mac). LaCie Setup Assistant helps you to quickly format the storage device according to your needs.

Please read the information below carefully if you:

- Abort LaCie Setup Assistant while it is formatting.
- Wish to reformat your storage device after LaCie Setup Assistant has successfully completed.
- Own a LaCie storage device that does not feature Setup Assistant (for example, select LaCie USB Keys).

ABOUT FILE SYSTEM FORMATS

Windows Users

FAT 32: FAT is an acronym for File Allocation Table, which dates back to the beginnings of DOS programming. Originally, FAT was only 16 bits, but after the second release of Windows 95 it was upgraded to 32 bits, hence the name FAT 32. In theory, FAT 32 volume sizes can range from less than 1MB all the way to 2TB.

It is the native file system of Windows 98 and Windows Me, and is supported by Windows 2000, Windows XP, Windows Vista, and Windows 7. When FAT 32 is used with Windows 2000, Windows XP, Windows Vista, and Windows 7 however, volume size is limited to 32GB (by the Windows partition utility, i.e. Disk Manager), and the individual file size is limited to 4GB.

NTFS: This acronym stands for New Technology File System, and it is the native file system for Windows NT, 2000, XP, Vista, and 7. NTFS offers several features that are not available with FAT 32: file compression, encryption, permissions, auditing, and mirroring drives. The minimum supported volume size for NTFS is 10MB with a maximum of 2TB when initialized in the MBR format. The more recent GPT format does not assign limits to file or partition sizes. Volumes created in NTFS are native read and write for Windows NT, 2000, XP, Vista, and 7. Earlier versions of Windows and Mac OS X 10.5 or higher may read and write to the NTFS partitions with the help of third-party drivers.

See the table below for a comparison of NTFS and FAT 32.

| Windows File System Formats |
|--|
| Use NTFS if: |
| ...you will be using the storage device only with Windows XP, Vista, and 7 since performance will be enhanced when compared to FAT 32. This file system is compatible in read-only mode with Mac OS 10.3 and higher. |
| Use FAT32 if: |
| ...you will be using your storage device with both Windows and Mac computers. Maximum single file size is limited to 4GB. |

Mac Users

You may customize the storage device by reformatting and/or partitioning it with separate file system formats. For optimal performance in Mac OS environments, format and partition the storage device as one large Mac OS Extended volume.

Mac OS Extended (HFS+): Mac OS Extended refers to the file system used by Mac OS X. HFS+ represents an optimization of the older HFS file system by using hard disk space more efficiently. With HFS+, you are no longer limited by block size.

MS-DOS File System (FAT 32): This is the Microsoft file system, more typically known as FAT 32. Use FAT 32 if you are going to be sharing your LaCie storage device between Mac and Window computers.

See the table below for a comparison between HFS+ and FAT 32 (MS-DOS).

| Mac File System Formats |
|---|
| Use HFS+ if: |
| ...you will be using the storage device on Macs only. Performance will be enhanced when compared to FAT 32. HFS+ is NOT compatible with Windows OS. |
| Use FAT32 if: |
| ...you will be using your storage device with both Windows and Mac computers. Maximum single file size is limited to 4GB. |

FORMATTING INSTRUCTIONS

The steps listed below will help you to format and partition a storage device. For more information on choosing the optimal file format, refer to **About File System Formats**.

Caution: Formatting will erase everything on the storage device. **LaCie highly recommends that you back up all data on your storage device before performing the steps below. LaCie is not responsible for any data lost due to formatting, partitioning, or using a LaCie storage device.**

Important Info: Formatting the **LaCie** partition will delete the included User Manual and utilities. Please copy all data, including documentation and software from LaCie, before formatting your storage device. User Manuals and select software may also be downloaded from www.lacie.com/support/.

Note: Refer to your operating system's documentation for more information on reformatting and partitioning your storage device.

Windows Users

Technical Note on volumes larger than 2TB: *Windows XP 32-bit* - This version of Windows will not recognize volumes larger than 2TB; *Windows XP x64, Vista and 7* - All of these versions of Windows can recognize volumes greater than 2TB. However, disks must be converted to the GPT file system before partitions greater than 2TB can be created. To do this, go to Windows Disk Management and right-click on the disk. Select **Convert to GPT**. You may now create partitions greater than 2TB.

1. Make sure the storage device is connected to and mounted on the computer.
2. Right-click on **Computer** and choose **Manage**. From the Manage window select **Disk Management**.
3. From the list of storage devices in the middle of the Disk Management window, locate your LaCie device.
4. By default, a partition is already created on the device with LaCie software utilities. Follow your operating system instructions to reset the existing partition.
5. To create a new partition, select **New Simple Volume**. Follow the on-screen instructions when the New Simple Volume Wizard appears.

Mac Users

1. Make sure the storage device is connected to and mounted on the computer.
2. Select **Utilities** from the **Go** menu in the Finder menu bar.
3. In the Utilities folder, double-click **Disk Utility**.

Disk Utility will display the message **Select a disk, volume, or image**. All connected storage devices, partitions, or disk images will be displayed in this column. Storage devices in this column may have multiple listings. The top name is the name of the physical device's manufacturer, and includes the formatted capacity.

4. Select the storage device in the left-hand column.
5. Click the **Erase** tab.
6. Choose a format from the drop-down window. See **About File System Formats** for more information on choosing a file format.
7. Give the volume a name.
8. Click **Erase...** and confirm your selection in the popup window.

GETTING HELP

If you are having problems with your LaCie product, consult the table below for a list of available resources.

| Order | Source | Description | Location |
|-------|---------------------|--|--|
| 1 | Quick Install Guide | Concise steps to follow for getting your product up and running | Either a printed leaflet or accessory box and included in the product box, or download PDF from the product page |
| 2 | Support Pages | Includes interactive troubleshooting topics for most common problems | www.lacie.com/support/ , select your product, then click the "Troubleshooting" tab |
| 3 | User Manual | Includes common troubleshooting topics | See Troubleshooting Topics below |
| 4 | Customer Support | Create an account on lacie.com , register your product, and fill out a support ticket | Create an account here: www.lacie.com/us/mystuff/login.htm?logout&rtn=mystuff |

Note: LaCie is dedicated to providing high quality products that enrich the lives of our customers. To help LaCie offer the best customer support, we encourage you to create an account and register your product at www.lacie.com/us/mystuff/login.htm?logout&rtn=mystuff. You can give us important feedback as well as receive updated information on your LaCie device.

TROUBLESHOOTING TOPICS

Note: Interactive troubleshooting, a highly effective way to resolve problems with your product, is available from www.lacie.com/support/. Select your product, then click the “Troubleshooting” tab.

All Users

Problem: My file transfers are too slow.

Q: Is the hard drive connected via a USB 3.0 to a USB 2.0 port on your computer or hub?

A: If your hard drive is connected to a USB 2.0 port or hub, this is normal. A SuperSpeed USB 3.0 device can only operate at USB 3.0 performance levels when it is connected directly to a USB 3.0 port or hub. Otherwise, the USB 3.0 device will operate at the slower USB transfer rates.

Q: Are you using a USB 3.0 hub, host bus adapter, or peripheral connection device?

A: Check to see that the SuperSpeed USB 3.0 drivers for your USB 3.0 device have been installed correctly. If in doubt, uninstall the drivers and re-install them.

Q: Does your computer or operating system support SuperSpeed USB 3.0?

A: Refer to the product packaging or consult the product support web page at www.lacie.com/support/ to check the minimum system requirements.

Q: Is your computer's internal hard drive limiting transfer speeds?

A: If your computer has a low-performance internal hard drive (typically a notebook or netbook computer), it will limit the transfer speed since the internal hard drive's transfer speed will be significantly less than that of the LaCie hard drive.

Problem: I got an error message telling me that the hard drive has been disconnected

Q: Did it happen when the computer was coming out of sleep mode?

A: Simply ignore this message. The hard drive will remount to the desktop. LaCie hard drives conserve power by spinning down when you set your computer to sleep mode, and when the computer is awoken from sleep, it may not give the hard drive enough time to spin-up from its sleep mode.

Problem: The displayed available capacity doesn't seem right.

Q: I just moved a lot of files into the Trash/Recycle Bin from my hard drive. Why isn't this reflected in the displayed available space?

A: Disk space will not be reclaimed until the file is completely erased. To remove the files forever, empty your trash/recycle bin.

Q: Why is the volume capacity less than advertised?

A: After formatting, the available capacity of a hard drive will show less than advertised on the box. The difference is based upon how capacity is viewed by the operating system. For example, a hard drive that can store 500,000,000,000 bytes is divided by 1,000,000,000 to equal 500GB. This is the actual capacity listed on the manufacturer's box. The operating system uses slightly different math, dividing 500,000,000,000 by 1,073,741,824 to equal 466GB.

Mac

Problem: The hard drive isn't appearing on my computer.

Q: Is your Finder configured to show hard drives on the desktop?

A: Check **Finder > Preferences > General tab > Show these items on the desktop:**. Make certain that **Hard Disks** is selected.

Q: Did you follow the correct installation steps?

A:

- Review the installation steps ([Getting Connected](#)).
 - Make sure that the power supply is connected to a functioning power outlet or power strip, and that the power button on the d2 and the power strip (if applicable) is turned on.
 - Check both ends of the interface cable to make sure they are fully seated in their respective ports.
 - Try disconnecting the cable then wait 10 seconds before reconnecting it.
 - If the hard drive is still not recognized, restart your computer and try again.
-

Problem: I'm receiving file transfer error messages and/or Time Machine does not work.

Q: Did you get an "Error -50" message while copying to the storage?

A: When copying files or folders from a computer to a FAT 32 volume, certain characters cannot be copied. These characters include, but are not limited to:

? < > / \ :

Since it does not offer optimal performance, LaCie does not recommend using the FAT 32 file system with your product. See [Optional Formatting and Partitioning](#) for help in choosing a file system. Additionally, Time Machine

is only compatible with hard drives formatted in HFS+ or HFS+ (Journaled). Reformat the hard drive for Time Machine compatibility.

Windows Users

Problem: The hard drive isn't appearing on my computer.

Q: Are both ends of the USB 3.0 cable securely attached?

A:

- Only use a USB 3.0 cable.
 - Check both ends of the cable to make sure they are fully seated in their respective ports.
 - Try disconnecting the cable then wait 10 seconds before reconnecting it.
 - If the hard drive is still not recognized, restart your computer and try again.
-

Q: Is the power supply connected?

A: Make sure that the power supply is connected to a functioning power outlet or power strip, and that the power button on the d2 and the power strip (if applicable) is turned on.

Q: Is the hard drive listed in Device Manager?

A: All LaCie hard drives appear in at least one place in Device Manager.

To access Device Manager, click on **Start** and select **Run** from the menu. In Windows Vista, the 'Run' option doesn't appear by default, so press [Windows-button] and [R] on your keyboard.

Enter the command: **devmgmt.msc**

Click **OK** and the Device Manager program will open. For troubleshooting, look in the **Disk Drives** section. It might be necessary to click on + on the left side.

If you're not sure if your hard drive is listed, unplug it, then reconnect it. The entry that changes is your LaCie hard drive.

Q: Is your hard drive listed next to an unusual icon?

A: Windows Device Manager can usually provide information about failures in accessories. It does not display the exact cause, or a solution, but it can assist in troubleshooting most problems.

A problematic device can be found by its unusual icon. Instead of the normal icon based on the type of device, it is instead an exclamation point, question mark, or an X.

Right-click this icon, then choose **Properties**. The **General** tab will show why the device is not working.

Still not working? There may be a hardware defect or other problem. Time to contact www.lacie.com/support/.

PRECAUTIONS

Caution: It is essential that you use only the power supply that shipped with your product, since it is a shielded-type power cord that meets FCC emission limits as well as to prevent interference to the nearby radio and television reception.

Caution: Modifications not authorized by the manufacturer may void the user's authority to operate this device.

Important info: Any loss, corruption or destruction of data while using a LaCie drive is the sole responsibility of the user, and under no circumstances will LaCie be held liable for the recovery or restoration of this data. To help prevent the loss of your data, LaCie highly recommends that you keep TWO copies of your data; one copy on your external hard disk, for instance, and a second copy either on your internal hard disk, another external hard disk or some other form of removable storage media. If you would like more information on backup, please refer to our website.

Important info: 1TB (Terabyte) = 1,000GB. 1GB = 1000MB. 1MB = 1,000,000 Bytes. Total accessible capacity varies depending upon operating environment (typically up to 10% less per TB).

HEALTH AND SAFETY PRECAUTIONS

- Only qualified persons are authorized to carry out maintenance on this device.
- Read this User Manual carefully and follow the correct procedure when setting up the device.
- Do not open a disk drive or attempt to disassemble or modify it. Never insert any metallic object into the drive to avoid any risk of electrical shock, fire, short-circuiting or dangerous emissions. The disk drive shipped with your LaCie hard drive contains no user-serviceable parts. If it appears to be malfunctioning, have it inspected by a qualified LaCie Technical Support representative.
- Never expose your device to rain, or use it near water, or in damp or wet conditions. Never place objects containing liquids on the LaCie hard drive, as they may spill into its openings. Doing so increases the risk of electrical shock, short-circuiting, fire or personal injury.

GENERAL USE PRECAUTIONS

- Power requirements 100-240 V~, 50-60 Hz, (supply voltage fluctuations not exceeding $\pm 10\%$ of the nominal and transient over-voltages according to over-voltage category II).
- Do not expose the LaCie hard drive to temperatures outside the range of 5° C to 30° C (41° F to 86° F); or to operational humidity beyond 10-80%, non-condensing, or non-operating humidity beyond 10-90%, non-condensing. Doing so may damage the LaCie hard drive or disfigure its casing. Avoid placing your LaCie

hard drive near a source of heat or exposing it to sunlight (even through a window). Inversely, placing your LaCie hard drive in an environment that is too cold may damage the unit.

- Rated cooling for altitudes up to 2000 meters.
- If your drive features a power cable, always unplug it from the electrical outlet if there is a risk of lightning or if it will be unused for an extended period of time. Otherwise, there is an increased risk of electrical shock, short-circuiting or fire.
- Use only the power supply shipped with the device (if applicable).
- Do not use the LaCie hard drive near other electrical appliances such as televisions, radios or speakers. Doing so may cause interference which will adversely affect the operation of the other products.
- Do not place the LaCie hard drive near sources of magnetic interference, such as computer displays, televisions or speakers. Magnetic interference can affect the operation and stability of your LaCie hard drive.
- Never use excessive force on your LaCie hard drive. If you detect a problem, consult the troubleshooting section in this manual.
- Protect your LaCie hard drive from excessive exposure to dust during use or storage. Dust can build up inside the device, increasing the risk of damage or malfunction.
- Never use benzene, paint thinners, detergent or other chemical products to clean the outside of the LaCie hard drive. Such products will disfigure and discolor the casing. Instead, use a soft, dry cloth to wipe the device.

WARRANTY INFORMATION

LaCie offers first-rate service and support through our generous three-tiered warranty policy. Our 1-, 2-, 3-, and 5-year policies include comprehensive, complimentary web-based resources, expert in-house technical support, and worldwide repair and/or replacement coverage. To benefit from this warranty, please contact LaCie Support at www.lacie.com/us/support where you can find online support and contact information. You may also contact representatives at the original point of purchase who will be able to help guide you.

Standard warranties vary depending on the product. To verify your product's warranty status and to see which standard warranty is included with your product, type in your product's serial number at www.lacie.com/us/support. If no warranty is listed under your product's name, this means that the warranty has expired.

WARRANTY UPGRADES

If you wish to extend your warranty coverage, you can purchase Silver, Gold, or Platinum Care or Advanced Exchange. For details, see www.lacie.com/warranties.

LEGAL INFORMATION

A standard LaCie limited warranty is included with all products. Please read the terms and conditions below.

LaCie Limited Warranty Policy

LaCie ("LaCie") warrants, to the original purchaser, that this equipment shall be free of defects in materials and workmanship for a period of one (1), two (2), three (3), or five (5) years, depending on the model, from LaCie's date of original shipment when the equipment is used normally and is properly serviced when needed. If you discover a defect covered by the warranty set forth above, your sole and exclusive remedy will be for LaCie, in its sole discretion to (i) repair or replace the product at no charge to you; or, if a repaired unit or replacement product is not available, (ii) to refund the current market value of your product. You acknowledge and agree that replacement product, at the sole option of LaCie, may be a new product or a remanufactured product. In order to receive the remedy set forth above, you must return the product during the warranty period and include with each returned product (i) a copy of your original purchase invoice to verify your warranty; (ii) a Return Material Authorization number; (iii) your name, address and telephone number; (iv) a copy of the bill of sale bearing the appropriate LaCie serial numbers as proof of date of original retail purchase; and (v) a description of the problem. The customer must pay all transportation costs for a returned product. The product will need to be returned to LaCie within the country of original retail purchase. This warranty applies only to hardware products; LaCie software, media, and manuals are licensed and warranted pursuant to separate written agreement. This warranty does not apply if the product has been misused or has been damaged by accident, abuse, misuse, or misapplication; if it has been modified without permission of LaCie; or if any LaCie serial number has been removed or defaced. If a customer has purchased a LaCie Advance Care Option (ACO) to go with this equipment, the ACO shall be valid for three (3) years from activation.

EXCEPT FOR THE LIMITED WARRANTY SET FORTH ABOVE, ALL PRODUCTS ARE SOLD “AS IS” AND LACIE EXPRESSLY DISCLAIMS ALL WARRANTIES OF ANY KIND, WHETHER EXPRESS, IMPLIED OR STATUTORY, INCLUDING THE IMPLIED WARRANTIES OF MERCHANTABILITY, NONINFRINGEMENT AND FITNESS FOR A PARTICULAR PURPOSE. WITHOUT FURTHER LIMITING THE GENERALITY OF THE FOREGOING, DOES NOT WARRANT (1) THE PERFORMANCE OR RESULTS OBTAINED FROM USING THIS PRODUCT, (2) THAT THE PRODUCT IS APPROPRIATE FOR THE CUSTOMER'S PURPOSES, (3) THE MANUAL IS ERROR FREE, OR (4) THAT NO DATA WILL BE LOST WHILE USING THE PRODUCT. THE ENTIRE RISK AS TO THE RESULTS AND PERFORMANCE IS ASSUMED BY THE CUSTOMER. THE WARRANTY AND REMEDIES SET FORTH ABOVE ARE EXCLUSIVE AND IN LIEU OF ALL OTHERS, ORAL OR WRITTEN, EXPRESS OR IMPLIED.

EXCLUSIONS AND LIMITATIONS

This Limited Warranty applies only to hardware products manufactured by or for LaCie that can be identified by the “LaCie” trademark, trade name, or logo affixed to them. The Limited Warranty does not apply to any non-LaCie hardware products or any software, even if packaged or sold with LaCie hardware. Manufacturers, suppliers, or publishers, other than LaCie, may provide their own warranties to the end user purchaser, but LaCie, in so far as permitted by law, provides their products “as is”. Software distributed by LaCie with or without the LaCie brand name (including, but not limited to system software) is not covered under this Limited Warranty. Refer to the licensing agreement accompanying the software for details of your rights with respect to its use.

LaCie does not warrant that the operation of the product will be uninterrupted or error-free. LaCie is not responsible for damage arising from failure to follow instructions relating to the product's use. This warranty does not apply: (a) to consumable parts, unless damage has occurred due to a defect in materials or workmanship; (b) to cosmetic damage, including but not limited to scratches, dents and broken plastic on ports; © to damage caused by use with non-LaCie products; (d) to damage caused by accident, abuse, misuse, flood, fire, earthquake or other external causes; (e) to damage caused by operating the product outside the permitted or intended uses described by LaCie; (f) to damage caused by service (including upgrades and expansions) performed by anyone who is not a representative of LaCie or a LaCie Authorized Service Provider; (g) to a product or part that has been modified to alter functionality or capability without the written permission of LaCie; or (h) if any LaCie serial number on the product has been removed or defaced.

No LaCie dealer, agent, or employee is authorized to make any modification, extension, or addition to this warranty.

Any loss, corruption or destruction of data while using a LaCie drive is the sole responsibility of the user, and under no circumstances will LaCie be held liable for the recovery or restoration of this data. To help prevent the loss of your data, LaCie highly recommends that you keep TWO copies of your data; one copy on your external hard disk, for instance, and a second copy either on your internal hard disk, another external hard disk or some other form of removable storage media. LaCie offers a complete line of CD and DVD drives. If you would like more information on backup, please refer to our website.

LACIE IS NOT RESPONSIBLE FOR SPECIAL, INCIDENTAL, OR CONSEQUENTIAL DAMAGES RESULTING FROM ANY BREACH OF WARRANTY, OR UNDER ANY LEGAL THEORY, INCLUDING LOST PROFITS, DOWNTIME, GOODWILL, DAMAGE TO OR REPLACEMENT OF EQUIPMENT AND PROPERTY, AND ANY COSTS OF RECOVERING, REPROGRAMMING, OR REPRODUCING ANY PROGRAM OR DATA STORED IN OR USED WITH LACIE PRODUCTS EVEN IF IT HAS BEEN ADVISED OF THE POSSIBILITY OF SUCH DAMAGES.

Some states do not allow the exclusion or limitation of implied warranties or liability for incidental or consequential damages, so the above limitation or exclusion may not apply to you. This warranty gives you specific legal rights, and you may have other rights, which vary from state to state.

Your opening of your package, your use of the product, or your return of the enclosed Registration Card acknowledges that you have read and agree to the terms of this Agreement. You further agree that it is the complete and exclusive state of the agreement between us and supersedes any proposal or prior agreement, oral or written, and any other communications between us relating to the subject matter of this Agreement.

Read carefully all information related to warranty and precautions of use of your new LaCie product in the user manual.

For products purchased in the United States, you may contact LaCie at 7555 Tech Center Drive, Tigard, Oregon 97223 USA. Email: sales@lacie.com. Website: www.lacie.com. Customer service: 503-844-4503.

Service DOA

On rare occasions, a newly purchased LaCie product may be delivered in non-working order. We are working to avoid these issues, but unfortunately, these situations may arise from time to time. Within the 15 calendar days of purchase, should you experience an issue with your new LaCie product, we ask you to return the product to the place where it was originally bought. You will be required to give a proof of purchase.

Customer Warning

Please be sure to back up your data before returning your drive to LaCie for repair. LaCie cannot under any circumstances guarantee the integrity of data remaining on a returned drive. We make no provisions for data recovery and cannot be held liable for any data loss on drives or media returned to LaCie.

All products returned to LaCie must be securely packaged in their original box and shipped with postage prepaid, except for Products registered under the Advance Care Option.

NOTE TO AUSTRALIAN CUSTOMERS

Our goods come with guarantees that cannot be excluded under the Australian Consumer Law. You are entitled to a replacement or refund for a major failure and for compensation for any other reasonably foreseeable loss or damage. You are also entitled to have the goods repaired or replaced if the goods fail to be of acceptable quality and the failure does not amount to a major failure.

Contact us:

LaCie Australia, 6/151 Beauchamp Rd, Matraville NSW 2036 AUSTRALIA

Phone: 02 8063 3711

Email: info.au@lacie.com

For fast technical support, create a support ticket after registering your product at www.lacie.com/au/register.

LEGAL INFORMATION

COPYRIGHTS

Copyright © 2014 LaCie. All rights reserved. No part of this publication may be reproduced, stored in a retrieval system, or transmitted in any form or by any means, electronic, mechanical, photocopying, recording or otherwise, without the prior written consent of LaCie.

CHANGES

The material in this document is for information only and subject to change without notice. While reasonable efforts have been made in the preparation of this document to assure its accuracy, LaCie assumes no liability resulting from errors or omissions in this document, or from the use of the information contained herein. LaCie reserves the right to make changes or revisions in the product design or the product manual without reservation and without obligation to notify any person of such revisions and changes.

FEDERAL COMMUNICATION COMMISSION INTERFERENCE STATEMENT

This equipment has been tested and found to comply with the limits for a Class B digital device, pursuant to Part 15 of the FCC Rules. These limits are designed to provide reasonable protection against harmful interference in a residential installation. This equipment generates, uses and can radiate radio frequency energy and, if not installed and used in accordance with the instructions, may cause harmful interference to radio communications. However, there is no guarantee that interference will not occur in a particular installation. If this equipment does cause harmful interference to radio or television reception, which can be determined by turning the equipment off and on, the user is encouraged to try to correct the interference by one of the following measures:

1. Reorient or relocate the receiving antenna.
2. Increase the separation between the equipment and receiver.
3. Connect the equipment into an outlet on a circuit different from that to which the receiver is connected.
4. Consult the dealer or an experienced radio/TV technician for help.

FCC Caution: Any changes or modifications not expressly approved by the party responsible for compliance could void the user's authority to operate this equipment.

This device complies with Part 15 of the FCC Rules. Operation is subject to the following two conditions: (1) This device may not cause harmful interference, and (2) this device must accept any interference received, including interference that may cause undesired operation.

Important info: FCC Radiation Exposure Statement: This equipment complies with FCC radiation exposure limits set forth for an uncontrolled environment. This equipment should be installed and operated with minimum distance 20 cm between the radiator & your body.

This transmitter must not be co-located or operating in conjunction with any other antenna or transmitter. The availability of some specific channels and/or operational frequency bands are country dependent and are

firmware programmed at the factory to match the intended destination. The firmware setting is not accessible by the end user.

WEEE



This symbol on the product or on its packaging indicates that this product must not be disposed of with your other household waste. Instead, it is your responsibility to dispose of your waste equipment by handing it over to a designed collection point for the recycling of waste electrical and electronic equipment. The separate collection and recycling of your waste equipment at the time of disposal will help to conserve natural resources and ensure that it is recycled in a manner that protects human health and the environment. For more information about where you can drop off your waste equipment for recycling, please contact your local city office, your household waste disposal service, or the shop where you purchased the product.

MANUFACTURER'S DECLARATION FOR CE CERTIFICATION



We, LaCie, solemnly declare that this product conforms to the following European standards: Electromagnetic Compatibility Directive (2004/108/EC); Low-Voltage Directive: 2006/95/EC

TRADEMARKS

Apple, Mac, Time Machine, and Macintosh are registered trademarks of Apple Computer, Inc. Microsoft, Windows XP, Windows Vista, and Windows 7 are registered trademarks of Microsoft Corporation. Other trademarks mentioned in this manual are the property of their respective owners.

CANADA COMPLIANCE STATEMENT

This Class B digital apparatus meets all requirements of the Canadian Interference-Causing Equipment Regulations.

CAN ICES-3 (B)/NMB-3(B)

JAPAN COMPLIANCE STATEMENT

This is a Class B product based on the standard of the Voluntary Control Council for Interference from Information Technology Equipment (VCCI). If this is used near a radio/TV receiver, it may cause radio interference. Install the equipment according to the manual. This statement does not apply to the LaCie CloudBox.